



LEP DIRECTORS BOARD

Friday, 28th May 2021 at 10.00am

Via MS Teams

Paper 0 - Greater Lincolnshire LEP Board Agenda

Time	Item	Lead	Publication
10.00	Welcome, Apologies, Declarations of Interest	Chair	
	FOR APPROVAL: LEP Board Minutes-20/04/2021 FOR INFO: Review of Actions FOR INFO: Decision Log	Chair	Paper 1.0 attached Paper 1.1 attached Paper 1.2 attached
Governance			
10.05	FOR INFO: Chairs and CX Report	Chair/CX	Paper 2 attached
Delivery (Pt 1)			
10.15	FOR INFO: Business Lincolnshire Report	James Pinchbeck Samantha Harrison/ Angela Driver	Paper 3 attached
Governance			
10.50	FOR DISCUSSION: Clifton Strengths embedding	Chair	Verbal
Strategy			
10.45	FOR APPROVAL: Policy and Research Priorities	James Baty	Paper 4 and presentation attached
Delivery (Pt2)			
11.00	FOR DECISION Financial Review Staffing Structure Comms Review and Forward Plan Revised Delivery Plan and Budget 2021/2022	Ruth Carver	Paper 5 to follow Paper 6 to follow Paper 7 attached Paper 8 to follow
11.45	FOR INFO: Capital Programme Report	Halina Davies	Paper 9 attached
11.50	FOR DECISION: Pipeline Scheme Approval	Halina Davies	Paper 10 & Appendix A attached
Forward Agenda			
12.10	FOR INFO: Forward Agenda Plan for debate	All	Paper 11 attached
	Close		

Access and Circulation of papers is public unless otherwise stated as confidential, and in line with the [Confidential](#) Reporting Policy.

Attendees: Pat Doody - Chair (Non-Executive Director), Cllr Philip Jackson - Vice Chair (NELC), Sarah Louise Fairburn - Vice Chair (Imp & Maker), Debbie Barnes (CX, LCC), Cllr Colin Davie (LCC), Cllr Craig Leyland (ELDC), Cllr Oliver Hemsley (RCC), Cllr Rob Waltham (NLC), Alric Blake (AllTech), Dean Fathers (Health), Gary Headland (Lincoln College, IoD and Lincs Chamber), Zoe King (Epix Media), Nick Worboys (Longhurst), Mandy Watson (Ambitions Personnel), Darren Cunningham (Phillips 66), Yvonne Adam (Youngs Seafood), Alison Ballard (BAE Systems), Andrew Hunter (UoL), Julian Free (UoL), Simon Bird (ABP)

Apologies: Suraya Marshall (RAF Cranwell), and observers Andrew Crookham (Accountable Body & Section 151 Officer), Stephen Fidler (DfT), Simon Green (NELC)

Observers: Pete Holmes (BEIS), Clive Tritton (NLC),

LEP Exec: Ruth Carver, James Baty, Halina Davies, Sue Groves

For Agenda items: Samantha Harrison LCC Business Lincolnshire , Angela Driver LCC Business Lincolnshire, James Pinchbeck, Chair of Business Lincolnshire

Additional Papers

AP1 - GLLEP Investment Board draft minutes from 1st April 2021

Links to website once draft minutes have been published:

Manufacturing Board draft minutes from 28th April 2021:

<https://www.greaterlincolnshirelep.co.uk/about/boards/manufacturing-board/>

Defence & Security Advisory Board draft minutes from 13th May 2021:

<https://www.greaterlincolnshirelep.co.uk/about/boards/defence-and-security-advisory-board/>

Food Board: <https://www.greaterlincolnshirelep.co.uk/about/boards/lep-directors-board/>

Key Dates for 2021

GLLEP Board Quarterly meeting: 30 th July, 26 th November GLLEP Board Monthly meeting: 20 th April 2021, 29 th June, 28 th September, 26 th October	GLLEP Investment Board: 7 th September, 26 th November
GLLEP Appointments Committee: 2 nd June	GLLEP Employment & Skills Advisory Panel: 15 th June, 12 th July, 11 th August, 13 th September, 13 th October, 16 th November, 14 th December
GLLEP Energy Council: 9 th June, 20 th October	GLLEP Food Board: 19 th November
GLLEP Health & Care Enterprise Board: 4 th June, 8 th October	GLLEP Manufacturing Board: 20 th July, 12 th October
GLLEP Visitor Economy Board: 22 nd June, 21 st September, 15 th December	



Greater Lincolnshire LEP

Board

20th April 2021

Via MS Teams

Draft Minutes

Present: Board Directors: Pat Doody - Chair, Cllr Philip Jackson - Vice Chair (NELC), Cllr Colin Davie (LCC), Cllr Craig Leyland (ELDC), Cllr Oliver Hemsley (RCC), Alison Ballard (BAE Systems), Alric Blake (Alltech), Andrew Hunter (UoL), Darren Cunningham (Phillips 66), Dean Fathers (Health), Debbie Barnes (CX LCC), Gary Headland (Lincoln College, IOD and Lincs Chamber), Julian Free (UoL), Mandy Watson (Ambitions Personnel), Nick Worboys (Longhurst), Simon Bird (ABP), Zoe King (Epix Media)

Apologies: Directors: Suraya Marshall (RAF Cranwell), Cllr Rob Waltham (NLC), Yvonne Adam (Youngs Seafood), Sarah Louise Fairburn - Vice Chair (Imp & Maker), Observers: Stephen Fidler (DfT), Simon Green (NLC), Andrew Crookham (S151 Officer & Accountable Body)

Observers: Peter Holmes (BEIS), Clive Tritton (NELC)

LEP Officers: Ruth Carver, Halina Davies, James Baty, Sue Groves (Note Taker)

For Agenda items: Lewis Stringer (British Business Bank)

Apologies and Declarations of Interest - Apologies were noted as above.

Full declarations of interest for each individual Board Director can be found at:

<https://www.greaterlincolnshirelep.co.uk/about/boards/> The LEP Board were reminded that declarations of interest are required as part of LEP governance and must be updated at least annually, and if anything changes to the LEP office at the earliest convenience.

Minutes & Matters Arising (Paper 1) - Pat Doody/Ruth Carver

The minutes from the Board meeting held on 23rd March 2021 were accepted as a true record.

Matters Arising:

- As at the last meeting, the Task and Finish Group had agreed the vision and priorities and asked for the LEP Executive to produce a business plan and to allocate resources, this to be carried out once Year End finances are known and will be presented at the May meeting.
- Proposing to hold an outdoor face to face meeting in June or July with Chairs of all the Advisory Boards, followed by a social with LEP Board Directors

ACTION: Strategy Session with board and Chairs of SOB's to be arranged before summer.

ACTION: Business Plan 2021/2022 at May Board

Chair's Report - Pat Doody

- ❖ Number of Directors attended the IoD course.
- ❖ Pat invited Simon Bird to give an update on the Humber Freeport
- ❖ Discussed using a consensus agenda for items at Board.

CX Report (Paper 2) - Ruth Carver

- ❖ Board Directors had read the report, and a few areas were highlighted by the CX.
- ❖ Verbal update on Year End spend ahead of a detailed report a) Single Local Growth Fund and Getting Building Fund (capital funds), these are broadly on track, SLGF spent with the exception of £8m which has been offset for 21/22. The Getting Building Fund, which was a £25.8m fund, all of the contracts have now been signed and contracted, this funding has to be spent by March 2022.
- ❖ The LEP Board thanked the Team for the good outcome and the work in this area.
- ❖ CGLU also regarding the SLGF and GBF would like to thank the LEP Team for the work that has been carried out in maximising the spend for Year End. The process of confirming outcomes of the Annual Performance Review, outcome letters, the payment of the second year Getting Building Fund and the core funding is still pending.
- ❖ National LEP Review - the CX update the board on the current understanding of the LEP Review being undertaken by the Government and will look at how LEPs can evolve. GLLEP is part of a working group, working with the LEP Network and directly with BEIS. The terms of reference have now been signed off by ministers, which will be shared with the Board Directors, and a broad timetable for the summer has been set. A number of workstreams have been established, looking at form, function and role of LEPs, looking at where LEPs can add value. Will update the Board at each meeting going forward. PH said that, as part of the Review process, discussions will take place with business support organisations and key stakeholders, ie, Universities.

Business Roundtables - James Baty

- 7 Sectorial Roundtables have been held to engage with "top 100" businesses, which involved 120 contacts with 51 businesses attending in order to gain critical insight and intelligence from various sectors. The Roundtables covered Covid, EU Exit and Leveling Up and what it means for each sector.
- 31 actions have now been included in an Action Plan, which can be shared.
- Follow-up Roundtables may be arranged in the future.
- SB gave an update regarding the Humber Freeport:
 - Engagement with Government is ongoing and progressing well
 - Focus of the Humber Freeport is governance and that North East Lincolnshire Council will be the Accountable Body.
 - There is Freeport Steer Co Board, which Simon is the Chair

UK Recovery - Zoe King

- Generally, the message is positive, although there are SMEs that struggled over the last year now have a plan to open up the country economically and have used their time wisely over the last few months on working on how to go forward.
- Had a conversation with FSB who are seeing a lot less enquiries from small businesses, but that could be because they no longer have the fight in them when they are not receiving any assistance. The groups that are struggling the most are small businesses that are limited companies.
- Growth Hub update to be available at the next meeting - RC
- PD - there may be a Roundtable to engage with small businesses.

ACTION: Arrange a small business roundtable with FSB.

Progress of Midlands Engine Investment Fund for Greater Lincolnshire - (Item 3) - Lewis Stringer

- Lewis introduced himself as the Senior Manager for the East and South East Midlands and the British Business Bank is Government's economic development bank to help drive economic growth by making markets work better for small businesses.
- Presentation to give an update on the British Business Bank and the Midlands Engine Investment Fund.
- Have 6 KPIs to increase the amount of finance in the market place to SMEs, to diversify the options available to SMEs, addressing the regional disparity, endeavor to encourage and enable SMEs by providing them with information and education to increase their awareness of the finance options available, increasing looking at being a centre of expertise for SME finance, work with delivery partners to provide greater depth equity funding.
- Highlighted programmes that would be of interest which are relevant to GLLEP and Growth Hub perspective is "Start Up Loans", "Regional Angels Programmes", "Enterprise Capital Fund" and "Recovery Loan Scheme".
- Work with approximately 150 delivery partners to carry out all the objectives and during the pandemic had specific schemes to deliver with the guarantee of Government. From the Future Fund where approximately 1300 loans were deployed, only 16 were from the East Midlands region to the value of £19m.
- Support 2m SMEs across the country.
- Midlands Engine Investment Fund is a regional fund which addresses the KPIs and objectives where there are regional disparities. There are 4 funds: small business loans, debt finance, proof of concept and equity finance. GL SMEs have received approximately £11m in funding.
- Need to ensure that SMEs are aware of what is available and how to access funding although the 3 Growth Hubs are working well together.
- A number of webinars are to be held around MEIF.
- About to launch a campaign on education, awareness raising and market material from BBB.

Information on deals can be gained by the MEIF website and are listed by nature of deal and geographically.

Actions:

Circulate presentation to Board, and follow up between JF and LS

Defence and Security Board Terms of Reference (Paper 3) - Julian Free/Alison Ballard

- Membership of the Board has been consolidated.
- Original Defence Board has now been opened up to include security, to open up beyond the military in order to include the whole security sector, which then cuts across many businesses, including at SME level around cyber-security, communications, etc.
- The I-Star Centre for UK Defence and the NATO Centre of Excellence being based at Waddington, there is a whole range of activity and support that can be delivered to grow that sector, both locally and internationally. The aim is to exploit positioning of that across Lincolnshire and beyond so that a Centre of Excellence or Hub can be developed.
- The Board has been set up to look at how GL makes defence (armed forces) and big defence companies aware of the resources that are available across Lincolnshire to support that activity from direct academic support to looking to solve challenges that people are facing, ie military challenges or struggling companies, but with the right academic support to develop innovative solutions.

Actions:

- ❖ The Terms of Reference were agreed subject to slight amendments

Darren Cunningham left the meeting

Strategic Infrastructure Delivery Plan and Pipeline (Paper 4) - Halina Davies

- GL LEP had a call for pipeline projects in November 2020 which closed in February 2021 and this paper provided a summary of the Strategic Infrastructure Delivery Plan (SIDP) related schemes and their subsequent assessment.
- The Board made comments on the importance of ensuring that all priority sectors are encouraged to submit pipeline bids (perhaps strengthening communications to those not well represented during this call), and agreed the direction of travel for the SIDP, including the carrying out of gap analysis to help inform future calls.
- It was explained that whilst the SIDP Infrastructure related projects from the call process had been assessed and scored, the non-Infrastructure projects would be assessed next week and will be discussed at the next GL LEP Investment Board.

Actions:

- ❖ The Board supported the on-going SIDP pipeline gap analysis
- ❖ Investment Board to review non-SIDP call submissions on the 28th May
- ❖ That the final overarching revised GLLEP pipeline is endorsed and published by the Board in June

Simon Bird, Debbie Barnes left the meeting

Forward Agenda (Paper 5) - Ruth Carver

- Any items for the agenda, please contact the LEP Executive

Any Other Business

- DfE have today published a consultation on flexi-apprenticeships which is an important issue and also information on Local Skills Improvement Plans, looking for 6 or 8 Pathfinders, which has been previously discussed ad also Strategic Development Funds White Paper looking for 12 area to pilot items.

Next meeting - 28th May 2021

GREATER LINCOLNSHIRE LEP BOARD ACTION LOG - March 2021

Date	Item	Action	Action by	Status
27/05/2020	Board Briefing	Business Roundtables - Final Report to May Board	James Baty LEP - May 21	Underway
24/07/2020	Board Meeting	Complete Defence Sector Board Recruitment	Alison Ballard/Julian Free - March 21	Completed
		Equality and Diversity Action Plan	Dean Fathers - March 21 Board	Completed
		GLLEP Recovery Fund - Develop outline business cases for the four remaining areas of digitisation, supply chain and transforming skills once revival plan is complete.	Halina Davies May 21	Due May
		Develop an economic dashboard to share regularly with the LEP Board, and wider partners and publish, economic analyst joined the team in Jan 21.	James Baty	Underway June 21
26/08/2020	Board Meeting	Virtual meeting with northern Lincs businesses	Kate Storey	Postponed
06/11/2020	Board Meeting	Local Area Energy Action Plans - Need to look at funding and priorities that can be achieved in a short time and seek funding from local partners - awaiting budget realignment post year end.	Duncan Botting/Andrew Brooks	Pending
		Ask the local authorities to develop a Greater Lincolnshire Digital Strategy Group to take forward joint actions, such as digital mapping and evidence base, digital investment strategy and joint bids. Led by NE Lincs	LEP Strategy Group	Underway
19/01/2021	Board Meeting	Local Area Energy Plans - subject to board approval - circa £20,000 to be used to develop a LAEP.	Duncan Botting/Andrew Brooks	

		Give feedback from the meeting held with Greater Lincolnshire MPs	Ruth Carver	Completed
26/02/2021	Board Meeting	UK Food Valley - Need to build a core team to co-ordinate and accelerate the sector, an indicative budget of £300k per annum is sought. GL LEP Board agree to an initial contribution of £35,000 to kick start activity and planning, with additional contributions subject to an ongoing budget review and alignment of priorities and presentation to be circulated.	Sarah Louise Fairburn	Ongoing
		Collaboration & Transition - Meetings to be arranged with Humber and East Yorkshire LEP once it starts on 1 st April	Pat Doody	Ongoing
		LEP Vision & Priorities: A further discussion on priorities to be held at the March Board meeting and approach Sub-Boards/Committees for their priorities in order to set out ambitions.	Working Group of LEP Board	Ongoing
		Employment and Skills Advisory Panel to discuss the FE White paper further and bring back recommendations to the May meeting.	Simon Telfer/Clare Hughes - May 21	Ongoing
		Draft skills statement report to be written for the March Board meeting	Simon Telfer/Clare Hughes - march 21	Completed
		Health & Care Management Board - Supportive of finding the gaps, but the request for commissioning a report would be discussed as part of the budget process and presentation to be circulated.	Dean Fathers/Andrew Brooks	Pending
23/03/2021	Board Meeting	Feedback on Annual Performance Review	Board Directors	Ongoing
		LEP Vision & Priorities - Document to be refined and circulated	Working Group of LEP Board	Ongoing
20/04/2021	Board Meeting	Strategy session with Chairs of Strategic Advisory Boards before summer	Sue Groves	Ongoing
		Business Plan for May 2021 Board meeting	Ruth Carver	Ongoing
		Arrange a Roundtable for Small Businesses		Ongoing
		Circulate MEIF presentation to Board Members	Ruth Carver	Completed
		Investment Board to review non-SIDP call submissions on the 28 th May		



LEP Board Decision Log for the year to date

Date	Decision Making Body	Decision Made
31/01/2020	LEP Board	<ul style="list-style-type: none"> • Agreed to accept the offer from SUFC regarding legal costs. • Health & Care Enterprise Committee and Food Committee to hold a joint meeting to explore common areas
30/03/2020	LEP Board	Meeting cancelled
29/04/2020	LEP Board	<ul style="list-style-type: none"> • Decision on the GLGF was deferred pending a wider discussion on repurposing LEP funds • Sarah Louise Fairburn was appointed as Private Sector Deputy Chair • Dean Fathers was appointed to the Investment Board • A monthly zoom call with our 10 local MP's is being established during Covid - action from the first call is collective lobbying on increased broadband speeds - action for a collective letter and PR. • Annual Budget for core funding was agreed by the Board • Draft delivery plan agreed subject to final sign off by the Board by email, and further guidance from CLG • Draft Lincolnshire Recovery Plan to come back to the June Board for a business view • Refresh LIS to be considered at the June Board
10/06/2020	LEP Board	<ul style="list-style-type: none"> • Circulate Annual Delivery Plan to be signed off by Board Directors by 10th July 2020. • Agreed that Clare prepare a letter for Government incorporating views of the Board, employers and the ESB • LEP will work with DWP and SHDC on redeployment and retaining • Amended LIS to be published locally subject to further business engagement and buy in from the business community.
24/07/2020	LEP Board	<ul style="list-style-type: none"> • Report on progress on board membership noted • Chairs/vice chairs of Strategic Advisory Boards to be invited to attend future Board meetings - Forward Plan • Impact of Covid-19 - LEP Board approved the paper and agreed the new actions • Re-purposing funds for Recovery Post Covid-19 - Option C was favoured reallocation of £2.4m, with a contingency amount of funding for flexibility purposes of up £500,000 for future use. The £700,000 allocation of additional resources to the LEP for the activity above was approved, with business cases being developed for Digitisation, responding to redundancies, supply chain and

		<p>transforming skills being bought back to a subsequent board to discuss and agree. Budget would be incorporated into the budget process, and reporting on progress would be undertaken through the normal quarterly reporting mechanisms.</p> <ul style="list-style-type: none"> • Finance & Audit Report - 19/20 Financial Statement was approved by the Board and agreed for publication and 19/20 Audit Report was approved by the Board
26/08/2020	LEP Board	<ul style="list-style-type: none"> • Approval of minutes from 24th July 2020.
30/09/2020	LEP Board	<ul style="list-style-type: none"> • Seek vice chair nominations for all boards • In the New year 2021 Officers to arrange an additional workshop on the Local Assurance Framework • GL CSR asks - Board Directors to discuss with their link or local MP • Equality and Diversity Action Plan to be developed • Reallocation of funds for Team Lincolnshire from MIPIM to Team Lincolnshire Business Plan - £15,000. • ESAP member to join the Centre for Better Ageing board.
06/11/2020	LEP Board	<ul style="list-style-type: none"> • Approval of appointment of auditor continuation - subject to approval of the accountable body • The LEP Board approved the direction of travel for Humber Freeports proposal to be developed • Agreed to forward a Collaboration Board between Humber and Greater Lincolnshire LEP • The Board approved the Recovery plan, and delegated the final sign-off to the Chair and Chief Executive.
19/01/2021	LEP Board	<ul style="list-style-type: none"> • That the Chair and CX be given delegated authority to support the bid and provide letters of support for the Humber Freeports
26/02/2021	LEP Board	<ul style="list-style-type: none"> • Local Area Energy Plans for southern lincolnshire - Board support for the approach, however financial contribution from the LEP would be considered at the budget realignment. • Health and Care - Board support for the approach of mapping opportunity, however financial contribution from the LEP would be considered at the budget realignment. • Approval of the UK's Food Valley Strategy and resources allocated.
23/03/2021	LEP Board	<ul style="list-style-type: none"> • Recommendations of Appointments Committee ratified by the LEP Board • Equality and Diversity Plan approved by the LEP Board • LEP Board approved the Interim Budget
20/04/2021	LEP Board	<ul style="list-style-type: none"> • LEP Defence & Security Advisory Board Terms of Reference agreed, subject to slight amendments • LEP Board supporting the ongoing SIDP gap analysis • That the final overarching revised GLLEP pipeline is endorsed and published by the Board in June

Paper 2 – Chief Executive's Report

Publication	LEP Public Paper (published)					
Meeting date:	28th May 2021					
Agenda Item:	3					
Item Subject:	Chief Executive's Report					
Author:	Ruth Carver					
For:	Discussion		Decision		Information	X

Area One - Governance -

Launched a call for a new Visitor Economy LEP Board Director - so please share this wide within your networks - [PR here](#)

Annual Performance Review 2020/21 - Directors are aware that the Annual Performance Review (APR) of LEPs took place in February, with the focus being on three themes of Governance, Delivery and Strategic Impact. Delivery this year encompassed Local Growth Fund (LGF), Getting Building Fund (GBF), Enterprise Zones and other programmes.

The markings this year moved away from a marking (Exceptional to Inadequate) to an outcomes-based approach with findings of “met” or “action needed.” The outcome of the APR was provided on 7 May, which confirmed GL LEP’s markings for the three themes as: Governance: Met • Strategic Impact: Met • Delivery: Met The outcome note advised that to ensure job outcomes and financial targets were achieved within the agreed timescales, progressing Getting Building Fund capital projects remained a government priority. It also confirmed that the grant offer letter for Getting Building Fund and core funding allocations for the 2021-22 year would follow shortly.

Area Two : Strategy

Queens Speech - [a detailed document accompanied the Queens Speech](#) - Of interest to the LEP is the 'levelling up opportunities' reference. The legislative year ahead includes a Levelling Up White Paper due "later this year" setting out "bold new policy interventions" including new jobs, boosting training, and growing productivity in places of previous decline. The Plan for Growth will lay the foundations for a recovery driven by the private sector and commits to legislation on Net Zero to underpin the Green Industrial Revolution and help create 250,000 green jobs across the UK

LEP Review - The LEP Review continues to progress, with four workstreams - Objectives and Functions; Geographies and Accountabilities; Representation and Interaction with Local Government; and Implementation and Funding - established or being established. This has been operating at pace and has made good progress. An update on the latest position with each of the workstreams will be provided at the Board meeting. Government officials have organised a series of local stakeholder roundtables, which are taking place in May. These roundtables will bring together key local partners to feed into the LEP Review. BEIS local area teams are compiling the invite lists which are likely to include HE/FE, BROs, LAs etc. The first session took place in the East Midlands on 14 May 2021 hosted by Rowena Limb CLGU. Two business representatives were invited to attend, Professor Mary Stuart, UOL and Katrina Pierce, FSB.

GL Economic Plan - The Economic Plan for Growth in Greater Lincolnshire has now been published. <https://www.greaterlincolnshirelep.co.uk/documents/economic-plan-for-growth-2021/> The plan, titled Protecting Progressing Prospering is the revival plan for Greater Lincolnshire was published as a soft launch at the end of April and is formed of priority 1-5 year actions aligned to the ambition of our key sectors and foundations of productivity as identified in

Paper 2 – Chief Executive's Report

the Local Industrial Strategy. The plan, despite being produced by the LEP, has been developed as a plan for the place with all partners from the Local Resilience Forum economic group. Partners remain in agreement that our shared ambitions and vision to drive food valley, decarbonisation defence and freeports economic growth across Greater Lincolnshire. The LEP will now develop a programme to deliver the plan and is in the process of identifying leads across the partnership to take forward the actions.

CBI - Latest CBI analysis of the country's regions has revealed the strengths and priorities of each according to key areas such as business activity, employment and connectivity. The 'Reviving Regions' study produced region-by-region 'scorecards' highlighting successes and assesses the challenges to post-pandemic growth. Recommendations for each region feature LEPs as part of the solution and aligns with the current direction of the LEP Review -

<https://www.cbi.org.uk/articles/reviving-regions-regional-scorecards-and-growth-priorities/>

Skills Accelerator: testing a new approach to shape technical skills A pilot for Local Skills Improvement Plans (LSIPs) was announced in the Skills for Jobs White Paper, aimed at shaping technical skills provision through collaboration between colleges, independent training providers and employers. The team are currently working with Hull and Humber Chamber and all colleges in the Humber to ensure a proposal to test the new approach across the Humber is submitted. The deadline for submission is 25 May 2021 and the proposal must build on the work of Skills Advisory Panels.

Area Three - Delivery -

Defence and Security Board - The first ever defence and security board was held this week - more info and the PR here <https://www.greaterlincolnshirelep.co.uk/whats-new/lep-announces-new-defence-and-security-board/>

Manufacturing Board and Food Board were held this month as well as one off Funding workshop for the Visitor Economy Board.

Humber Freeport - Humber Freeport is currently regarded as one of the most developed of the Freeport bids and the Freeports Working Group and Steer Co. aim is to submit the Outline Business Case (OBC) to government by this summer and establish the new management company by autumn. The Freeports bid team met again with MHCLG on 11th May to discuss progress with Site Level Agreements and OBC expectations and they are keen to understand likely impacts of tax/customs site incentives. MHCLG made reference to ports legislation and it being a good time for consideration of proposed changes. A follow up call on governance was held with MHCLG on the 12th May and briefing sessions with HMRC have begun in earnest. The Freeport relationship with DIT will also be important, particularly how the department handles enquiries on tax sites and protocols for working in the Freeport boundaries - a clear marketing approach needs to be developed by partners on this, perhaps combining existing LEP/LA investment marketing brochures as a starting point.

A meeting on planning implications is yet to be scheduled, with input required from for four local authorities on this. We have been given the green light by MHCLG to proceed with the OBC on the basis of the bid specification originally submitted and more recently discussed in more detail with the Freeports team, which is good news. There is a need to think about benefits for end users and some helpful discussions have taken place with investors already. Government will want to consider parity between Freeports so as not to distort the market, but the mechanics will be up to local delivery bodies.

Paper 2 – Chief Executive's Report

An MOU statement in principle is currently being agreed by all parties, but it is recognised that more detail will require sign off by boards and committees involved at a later point. The new Company Ltd by Guarantee (CLG) will want a say in the final Investment Policy, but there is a need to sign up to the Articles of Association and the SLA for business rate pooling at the point of incorporation of the CLG (working on a BID Levy type approach).

CLG/Accountable body relationship is starting to be explored with North East Lincolnshire Council having agreed to take on the role, but will need to be formally set out and agreed. Chaired by GL LEP Humber Freeport Innovation Sub Group met for the first time on the 11th May and will set out draft TORs for the next Steer Co meeting and Humber and East Yorkshire LEP has agreed to bring together a similar sub-group leading on skills as soon as possible.

Two local webinars on the Humber Freeport and what it means for our region have been successfully held to date, and an Invest Midlands event is due to take place on Freeports on 26th May with the LEP Chair and AB Ports participating in the panel discussions. There is also a national Ports Development Conference focused on Freeports being held on the 9th June with panel representation from GLLEP.

Inward Investment Activity - The LEP has continued to support foreign owned companies through 2020-21, building relationships and shaping future policy, whilst directing funds appropriately. By working closely with foreign owned companies, the LEP has supported them to grow in a direct benefit to the Greater Lincolnshire economy. The support has been critical through 2020-21 in a year where many companies have needed vital intelligence to support them in navigating through Brexit and the pandemic. The LEP were successful in securing a second year of Midlands Engine Challenge Funding for £49k which has helped support a further 35 new relationships with foreign owned businesses through the key account management programme, highlighting 11 potential investment projects and supporting three investment successes within the region in the food and advanced engineering & manufacturing sector.

The LEP have continued to receive a significant number of inward investment enquiries on behalf of the partnership and are currently supporting businesses within a variety of sectors including food, renewables and AEM to land within our region. Targeting leads for the South Lincolnshire FEZ continues to take place with several interested parties now in advanced discussions. A series of inward investment sector propositions have been developed including Agrifood, Advanced Engineering & Manufacturing, Ports & Logistics and Low Carbon in order to showcase the region and attract new inward investors - these are published on our website.

The Advanced Engineering and Manufacturing Brochure has been published - https://www.greaterlincolnshirelep.co.uk/assets/documents/Gr_Lincs_AEM_Investment_Opportunity_2021_v.1.pdf

The Made in Lincolnshire brochure has been published - <https://www.businesslincolnshire.com/media/2359/made-in-lincolnshire-brochure-may2021.pdf>https://www.greaterlincolnshirelep.co.uk/assets/documents/Gr_Lincs_Agrifood_Investment_Opportunity_2021_v.1.pdf

The Agri Food Sector Brochure has been published - https://www.greaterlincolnshirelep.co.uk/assets/documents/Gr_Lincs_Agrifood_Investment_Opportunity_2021_v.1.pdf

A bid with the Department for International Trade (DIT) to develop a High Potential Opportunity in Automation and Robotics within Food Processing was successful and will be published in April

Paper 2 – Chief Executive's Report

21. This will be used to market our region to the rest of the World through the DIT network enticing new investment into the region - the first of these events will take place virtually on 27th May 2021. A further discussion on a HPO for the off shore wind sector is underway.

20/21 Results

- 141 foreign owned businesses supported
- 65 individual meetings taken place to support foreign owned businesses
- 43 New foreign direct investment relationships welcomed
- 736 Jobs Created and 70 safeguarded for the 2020/21 financial year - This includes significant investment at SAGA Robotics who have created 32 jobs, Orsted's Hornsea Offshore Wind Project creating 284 jobs, Princes investing in a new canning facility at Long Sutton creating 50 new jobs.
- Over £4.2bn Foreign Direct Investment Value (including several large scale acquisitions)

Team Lincolnshire -Team Lincolnshire Ambassadors are a vital part of driving forward Greater Lincolnshire's investment and sector development ambitions and encourage collaborative working amongst members and the public sector through events and promotion.

Team Lincolnshire www.teamlincolnshire.com is a partnership brought together with the purpose of attracting and supporting business investment in Greater Lincolnshire. Its concept is that all members become Lincolnshire ambassadors and by working together create a stronger, unified voice. They have been pivotal at supporting the wider business community through the pandemic by hosting jointly with Business Lincolnshire, 12 formal webinars providing critical intelligence regarding working in a Covid-19 environment and subject areas to stimulate regrowth such as Finance for Investment and Recovery, The Challenges and Opportunities of Modern Methods of Construction, Lincoln Town Deal Opportunities, Decarbonisation and a flagship webinar on the Opportunities at the South Lincolnshire Food Enterprise Zone. These events have attracted nearly 1000 attendees in total.

In October 21 a new two year Business Plan was launched setting out the future direction through five strategic objectives which align with the GLLEP's ambitions for growth and investment. KPIs were developed to track the progress of the Business Plan and the work that the ambassadors are doing to undertake business to business collaborations, influence and develop investment sites and create new jobs. They have already played a key role in collaborating together to rally support and to bring forward new schemes and sites across our region including the South Lincolnshire Food Enterprise Zone.

Team Lincolnshire is promoting our strengths, fuelling the local supply chain, supporting the local economy, and giving members the opportunity to work on some of our most significant projects. 121 members have joined since the official launch of Team Lincolnshire in November 2017 and during 2020-21 - 32 new members joined.

Team Lincolnshire results 2020-21

- 121 Team Lincolnshire Members -32 New Team Lincolnshire Members
- Hosted 47 Weekly Informal Virtual TLC (Team Lincolnshire Cares) Coffee Clubs - Hosted by a TL ambassador providing practical advice and support on subjects such as Covid-19 in the Construction Industry, Employment Law or Mental Health Awareness.
- Hosted 12 Formal Monthly Joint Webinars with Business Lincolnshire
- 18 Direct involvements from Team Lincolnshire ambassadors with influencing or development investment sites - Example: In November West Lindsey District Council

Paper 2 – Chief Executive's Report

entered a new partnership with national housebuilder, Keepmoat Homes, to deliver 454 new homes at their Gainsborough Sustainable Urban Extension. This scheme marks the first investment by Keepmoat within our county.

- 127 Team Lincolnshire business to business collaborations - Example: Team Lincolnshire Ambassador's Pygott & Crone have supported ambassador Wingman Ltd to source a new Lincolnshire based dedicated office space at Long Bennington helping them expand and grow. Team Lincolnshire Lincolnshire ambassadors are playing a pivotal role in taking the S Lincs FEZ forward with Core Architects working on the design of the Cluster Hub building and Pygott & Crone being the marketing agent for the site.
- 84 new jobs created by Team Lincolnshire businesses

Employment and Skills Update

Skills Accelerator: is a core part of the vision for how government seek to shape the technical skills system in the future. DfE have launched a prospectus for bids to develop a Local Skills Improvement Plans (LSIP) and a Strategic Development Fund (SDF), as previously announced in the Skills for Jobs White Paper. Skills Accelerator aims to help Colleges/training providers to strengthen relationships and partnerships with employers, and help employers give providers a clearer indication of the skills needed in the local area, and in turn transform the responsiveness of local skills systems in meeting the changing skills needs of employers. The team are currently working with Hull and Humber Chamber and colleges/providers in the Humber to ensure a proposal to test the new approach is submitted. The deadline for submission is 25 May 2021 and the proposal must build on the work of Skills Advisory Panels.

Flexi-Job Apprenticeships: Apprenticeships support people starting out in a career as well as upskilling and retraining workers. The rules for becoming an apprentice usually mean that the individual need a minimum of 12 month employment contract. However some jobs are short term - in the creative industry or construction for example - and so government wants to trial new and more flexible schemes. Flexible apprenticeships, accelerated apprenticeships and possibly modular schemes that would be suited to seasonal sectors are likely to be trialled. A consultation about the role of an ATA organisation (an employment agency for apprenticeships) is underway with closing date 1st June. The Greater Lincolnshire Employment and Skills Board and LCC worked together on a pilot ATA a number of years ago, and there also now are a number of registered ATA's operating locally (AGI, Sleaford, Ongo in Scunthorpe and the Humber Engineering Training Association).

[Flexi-Job Apprenticeships: Reshaping the role of Apprenticeship Training Agencies - Department for Education - Citizen Space](#)

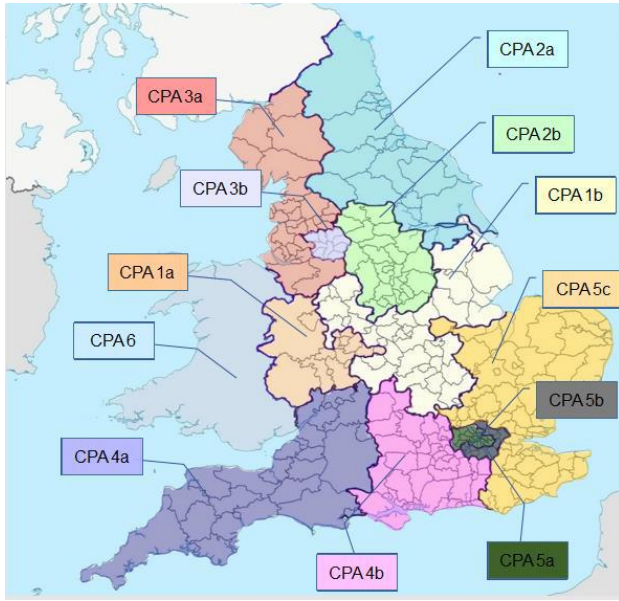
Restart: This scheme is part of government's Plan for Jobs announced at the Spending review in November 2020. It will support people who have been unemployed for 12 months or more back into work and is at least a 3 year programme.

The team has been supporting DWP with information about the local landscape and questions to help shape part of the national procurement, alongside other LEP and LA colleagues across the country. The results of the procurement have now been published and it is understood the delivery will start later in the summer.

The contract package areas are large and unusual. Greater Lincolnshire is spread across 3 contract packages. The team will be an important resource for the new contract deliverers in making sure links are made to relevant stakeholders and to help them integrate their services so

Paper 2 – Chief Executive's Report

that they are maximised for local residents, as they do not currently have a presence in the areas.



For further details [Restart scheme: Contract Package Areas - GOV.UK \(www.gov.uk\)](https://www.gov.uk/restart-scheme-contract-package-areas)

UK Food Valley - We have submitted two funding bids over the last two weeks to further develop the UK Food Valley programme - one to CRF at LCC for 1.7 million and one for an Innovate programme on digital supply chains smaller at £200,000.

Economic Intelligence

- UK gross domestic product (GDP) is estimated to have grown by 2.1% in March 2021, the fastest monthly growth since August 2020, as schools in some parts of the UK reopened throughout the month. The growth has been driven by strong growth in the construction sector which grew by 5.8%.
- In Q1 2021, there were 1,821 business formations and 1,265 business cessations in Greater Lincolnshire. In terms of formations, this is the highest number of business formations in any quarter dating back to when the figures were available in 2005.
- Latest trade figures show that imports from outside the EU made up the majority of total imported goods for the first time since comparable records began in 1997, but it is still too early to tell how much of this represents a permanent shift away from trade with the EU.
- Around 12% of eligible employees remain on furlough in Greater Lincolnshire, below the national rate of 14%.
- The latest vacancy numbers show a massive increase in "transport / logistics / warehouse" vacancies with the view that jobs within this sector are taking longer to fill and accumulating. Nationally, it is being reported that the haulage sector is particularly finding it hard to recruit at the moment. Figures for Greater Lincolnshire indicate that vacancies for HGV drivers are only outnumbered by vacancies for nurses.

Paper 2 – Chief Executive's Report

Key Actions Against the ADP 2020/21

Key actions for 2020/21			Section detail and lead	
Strategy	Local industrial Strategy (LIS) and Recovery and Renewal Plan Completion:	Complete ✓	1.1 Local industrial Strategy (LIS) and Recovery and Renewal Plan Completion	<ul style="list-style-type: none"> James Baty
	Implementation of (E)SAP Priorities	Complete ✓	1.2 Skills Advisory Panel	<ul style="list-style-type: none"> Clare Hughes
	Liaison with Cities and Local Growth Unit: Local Industrial Strategy: the LEP will continue to provide regular updates and maintain engagement with Cities and Local Growth Unit on progress on the completion of its Local Industrial Strategy and Recovery Plan and other strategies. Cities and Local Growth Unit will respond to LEP requests for support and challenge, drawing in other Government Departments as appropriate.	Complete ✓ (Ongoing)	1.1 Local industrial Strategy (LIS) and Recovery and Renewal Plan Completion 1.6 Working with national/ reg bodies 1.6.1 Midlands Engine 1.6.2 Midlands Connect 1.6.3 Northern Powerhouse	<ul style="list-style-type: none"> James Baty/Cathy Jones Ruth Carver/ Linsay Hill Pritchard Ruth Carver Ruth Carver Ruth Carver
	LEP Geography:	Complete ✓	1.5.1 Humber LEP 1.5.3 Rutland 1.5.4 New Anglia & CPL 1.5.5 LEP Network	<ul style="list-style-type: none"> Ruth Carver Ruth Carver Ruth Carver Ruth Carver
	Deliver against communications and engagement plan for 2020/21	Complete ✓	1.3 Communications and Partnerships	<ul style="list-style-type: none"> Kate Storey
	Review of the LEP's social media presence	Complete ✓	1.4 Development of engagement plans & channels	<ul style="list-style-type: none"> Kate Storey
	Continue to work with Lincolnshire County Council to build on links with China, including: <ul style="list-style-type: none"> Production of a list of China-ready businesses Work with the Hunan Department of Commerce and the Foreign Commonwealth Office to support business matching 	Ongoing (delays due to Covid)	1.7 Strengthening links with Hunan, China	<ul style="list-style-type: none"> Angela Driver

Paper 2 – Chief Executive's Report

	Business Lincolnshire - Growth Hub <ul style="list-style-type: none"> Deliver a comprehensive growth hub and programmes for the business community of Greater Lincolnshire through the Growth Hub Governance Board. Detail in board paper 	Complete ✓	1.10 Working with Business	<ul style="list-style-type: none"> Angela Driver
	Team Lincolnshire: Deliver a programme of events and networking opportunities to promote Lincolnshire and encourage investment Promote Lincolnshire platforms Membership: Continue to grow the Team Lincolnshire community of members	Complete ✓	1.11 Team Lincs Ambassador Programme 1.12 Promote Lincolnshire	<ul style="list-style-type: none"> Karen Seal
	Annual Conference and AGM	Postponed due to Covid -19.	1.3 Communications and Partnerships	<ul style="list-style-type: none"> Kate Storey
Delivery	Project Delivery Programme: LEP and Accountable Body to meet with Cities and Local Growth Unit to review progress against the growth deal programme, informed by the quarterly data returns, in August 2020 (Quarter 4 and Quarter 1), October 2020 (Quarter 2) and January 2021 (Quarter 3).	Complete ✓	1.9.1 University Collaboration projects 1.9.2 FE Collaboration projects 1.9.3 Skills Capital Investment Fund 1.9.4 Working with Schools (EAN) 2.1 Growth Deal 2.3 LEP/other funds	<ul style="list-style-type: none"> Halina Davies Halina Davies Clare Hughes Natalie Poole
	Programme and Risk Management: The LEP and Accountable Body will regularly update Cities and Local Growth Unit on the development and implementation of the enhanced programme and risk management procedures.	Complete ✓	1.9 Investing in Education (SLGF) 2.1 Growth Deal 2.1.6 Coastal Communities Fund	<ul style="list-style-type: none"> Halina Davies/ Clare Hughes/ Linsay Hill Pritchard Halina Davies Nicola Radford
	Getting Building Fund £25.8m Programme to be contracted by March 2021 in	Complete ✓	2.2 Getting Building Fund	<ul style="list-style-type: none"> Halina Davies

Paper 2 – Chief Executive's Report

	order to enable delivery by March 2022.			
	Project Pipeline: LEP to continue to update its existing project pipeline in preparation for new funding opportunities.	Complete ✓	1. 2.4 Pipeline projects	<ul style="list-style-type: none"> Halina Davies
	Delivery of key projects: GLLEP has agreed a project delivery plan with Government for 2020/21 totalling £32.206million for the Growth Deal Programme as of the Quarter 4 dashboard. This is currently under review as a result of COVID-19.	Complete ✓	2.1 Growth Deal 2.2 Getting Building Fund 2.3.1 GL Growth Fund 2.3.2 Invest and Grow 2.3.3 Feasibility Fund 2.3.4 ESIF 2.3.5 LEADER	<ul style="list-style-type: none"> Halina Davies Halina Davies Samantha Harrison Cathy Jones Cathy Jones Ashley Myers Ashley Myers
Governance	Evolve the LEP , its sub-groups and our governance arrangements in line with national good practice, including: <ul style="list-style-type: none"> ESAP and SAB's. Training in NAF and LAF for Board Directors National (with LEP network) and local inductions for new Board Directors 	Complete ✓	3.1 Commitment to transparency/ accountability (LAF) 3.2 Ensuring Fit for purpose LEP 3.0 Governance 3.0 Governance	<ul style="list-style-type: none"> Lindsay Hill Pritchard/ Ruth Carver Kate Storey Lindsay Hill Pritchard Kate Storey
	Outcome of LEP Peer Review	Complete ✓	3.0 Governance	<ul style="list-style-type: none"> Ruth Carver
	Succession Planning	Complete ✓ (Ongoing)	3.0 Governance	<ul style="list-style-type: none"> Ruth Carver
	Local Assurance Framework: Local Assurance Framework March 2021, including a clear statement on legal personality, independent secretariat and scrutiny arrangements that comply with the National Local Growth Assurance Framework.	Complete	3.1 Commitment to transparency/ accountability LAF	<ul style="list-style-type: none"> Lindsay Hill-Pritchard/ Halina Davies
	Publication of annual financial statement and report 2019-20	Complete ✓	3.1 Commitment to Transparency and accountability	<ul style="list-style-type: none"> Kate Storey

Paper 3 - Impact of the Lincolnshire Growth Hub & Annual Report 20-21

Publication	Public Paper (published)					
Meeting date:	28/5/2021					
Agenda Item:	3					
Item Subject:	Impact of the Lincolnshire Growth Hub & Annual Report 20/21					
Author:	Samantha Harrison / Angela Driver					
For:	Discussion		Decision		Information	X

1 Summary

- 1.1 This report provides an update on the activity and impact on the LEP's business support arm, the Business Lincolnshire Growth Hub. It has been an unprecedented year and the Growth Hub has quickly responded to provide critical support to help sustain and stabilize businesses in Greater Lincolnshire and Rutland during this crisis. We have been working closely with our Local Authority colleagues who have been providing Covid-19 Response grants and this has been coupled with the EU Transition work and extra support services required to help the business community navigate through the new processes.
- 1.2 It has certainly been one of the hardest and the busiest years we have known, but the growth hub has continued to provide a highly regarded professional business support service throughout these difficult times. Our advisory teams went the extra mile to ensure our businesses feel supported, provided a sounding board/shoulder for their clients, (old and new) and we have received many "thank you" comments.
- 1.3 We are delighted to continue to work with our colleagues and businesses from Rutland and North and North East Lincolnshire and look forward to enhancing our work with the renewables, off shore and seafood sectors.
- The Hub continues to develop and grow, and new core BEIS funding of £573,250 has been secured for April 2021 to March 2022.
- 1.4 Over the next 12 months we will focus on supporting individuals to start a business, building resilience, supporting our businesses to access peer to peer support, utilise digital technology, adopt low carbon practices, and enhance their leadership and management skills and access new markets.
- 1.5 Renewed emphasis will be placed on enhancing communication channels through a front line telephone enquiry handling service, awareness raising and increasing business take up and extending social media reach.

2 Background

- 2.1 The Business Lincolnshire Growth Hub (BLGH) was launched by the LEP in April 2015 and since has engaged with over 19,627 businesses and provided more intensive support for over 5000 and created 1567 jobs.

Paper 3 - Impact of the Lincolnshire Growth Hub & Annual Report 20-21

2.2 Over the last 12 months the Growth Hub has received substantial funds to deliver vital business support offers;

Funding Secured	Amount	Requirements
BEIS Core Funding	£246,000	Scale Up Support and specialist advisory support, PR and Marketing, CRM, website, research and evaluation.
BEIS EU Transition Funding	£181,050	EU Transition business readiness support via specialist advice, resilience programme and outreach activities. East Midlands cluster role
BEIS Covid-19 Uplift Funding	£296,000	Covid -19 extra advisory resource, helplines, sector support programmes
BEIS Peer Networks	£292,768	Delivery of 17 Peer Networks and East Midlands cluster support
MHCLG Kickstart Grants	£776,842	Grants of £3,000 £268,914 Visitor Economy £507,928 General Businesses
ERDF Sustainable Business Development Programme 2	£1,814,551	Growth Lincolnshire will provide a comprehensive and enhanced offer of one to one support, capacity building and growth funding,
Total	£3,607,211	

3. East Midlands Cluster Lead Role

3.1 Since 2019 the Business Lincolnshire Growth Hub has been awarded the cluster lead role for the East Midlands region, covering Leicester and Leicestershire and D2N2 LEP's. Part of the BEIS core and uplift funds provide a contribution for the administration of this.

3.2 We have continued to hold bi monthly virtual meetings with D2N2 and LLEP Growth hub. We also have regular email, telephone calls and have develop a joint Cluster website building on our EU Exit website.

3.3 A Cluster level 'Action Plan' has been created and cross collaboration opportunities have been identified to align growth hub activities and ensure economies of scale in terms of provision, best practice, quality assurance, joint procurements, advisory capacity, CPD, research, business intelligence, software and sector alignment, for example EU Transition Programmes, telemarketing and intelligence gathering ,

Paper 3 - Impact of the Lincolnshire Growth Hub & Annual Report 20-21

developed work on the EM Digital Industrialisation & Manufacturing Support Framework .

- 3.4 We have continued to facilitate business intermediary linkages and trade/membership body joint working opportunities - to provide a consistent, high quality aligned approach and we have effectively embedded of national programmes and partner offers with our Cluster group e.g. DIT, Innovate UK, BBB, IPO, BBfA, P2P provision. We sit on the national Strategic Development and Delivery in working group, gather business intelligence weekly report and work with our Cluster members to develop business support solutions in response to economic shocks.

4 The Business Lincolnshire Growth Hub offer includes;

4. 10 general advisers, 1 Scale Up Account Manager and 9 specialist advisers plus a wider pool of other specialists that can be called upon as demand dictates
- One to one General Advice - fully funded, easy access to impartial business growth adviser who will undertake a Business Review and Action Plan
 - One to one specialist advice - fully funded specialist support around accessing finance, resource efficiency, supply chain development, digital, innovation, exporting as well as sectoral support such as for manufacturing, visitor economy and agri-food
 - ScaleUp Account Manager, ScaleUp Workshop Programmes including coaching
 - Business workshops, briefings & flagship events
 - Online information portal - www.businesslincolnshire.com - which provides:
 - Advice and grant scheme finder - information and access to all the publically funded and private business support offers as well as grants and growth finance
 - Guides and self-help tools
 - Events calendar
 - Information on business opportunities and skills
 - Access to National Business Support Helpline via phone or online webchat
 - Facilitated access to the national programmes including: Department for International Trade, Intellectual Property Office, Innovate UK, Enterprise Europe Network, etc.
 - Access to outreach 'spokes', e.g., enterprise, innovation and incubation spaces across the county, which provide services such as virtual office, hot desk facilities, meeting rooms, networking events, etc.

5 New Support offers developed during 2020/21

- 5.1 There has been unparalleled business support provision available to businesses to respond and recover from the pandemic. A significant number of new support offers have been provided:
- Development and delivery of a Survive and Thrive campaign, which highlighted all of the support available to businesses and delivered inspirational business stories to encourage innovation in business models to support continued trading through the pandemic. It also provided a range of guides and resources and highlighted webinar support across a number of related subject areas.

Paper 3 - Impact of the Lincolnshire Growth Hub & Annual Report 20-21

<https://www.businesslincolnshire.com/explore/building-business-resilience/covid-19-support/survive-and-thrive-bouncing-back-after-covid-19/>

- New Growth Hub Adviser for Rutland
- Specialist Advisers for the Agricultural / Horticultural Sector, the Visitor Economy and an Insolvency expert.
- The Manufacturing Transformation Programme continues to help manufacturers overcome the challenges set by the COVID crisis and adapt to future consequences by improving business performance, innovating product and service offerings or developing new business
- Supply Chain Improvement Programme to help businesses to identify current Supply Chain Gaps through a combination of one to one support and workshops
- The Greater Lincolnshire Manufacturing Network (GLMN) is a new network, led by the University of Lincoln which supports the growth and development of manufacturers by promoting best practice, new manufacturing processes and partnership opportunities. It has showcased technological advances, cutting edge thinking and act as a knowledge-transfer vehicle between academia and industry. Network event have including Manufacturing Made Smarter, Sustainability in the Supply Chain and Clean Growth.
- The Made In Lincolnshire interactive digital brochure to be used as a tool to showcase the strength and diversity of the manufacturing and engineering sector and support local, regional and national supply chain opportunities.
- The RESTART Support Programme assists businesses who are either exporting or importing and require specialist support and guidance in navigating the complexities of trading and ensuring compliance with trade regulations post EU exit.
- The Building Business Resilience Programme aims to ensure that businesses in the East Midlands are informed and prepared to deal with any challenges that may result from the UK's departure from the European Union, as well as to help them spot and capitalise upon opportunities that may result.
- Peer Networks a national pilot initiative to facilitate peer to peer learning to give business leaders the knowledge and confidence to implement and manage change. We delivered 17 sector networks; high growth, manufacturing, health & care, charities, rural, visitor economy and agriculture.
- Leadership and Wellbeing Hub Business Lincolnshire has joined with Lincolnshire County Council and Lincolnshire Chamber of Commerce to create the Leadership and Wellbeing Hub. The hub brings together expert advice, resources, virtual events and support sessions to aid local businesses and their staff during the COVID-19 pandemic, focusing on mental, physical and financial health.
- Support provided to Local Authority colleagues who were operating the Covid Response Grants and to Lincolnshire County Council for their £12m Covid Recovery Grant programmes.
- During 2020/21 we have aligned the workshop and event provision with our sister brand Team Lincolnshire, to enable greater reach and cross collaboration.

Paper 3 - Impact of the Lincolnshire Growth Hub & Annual Report 20-21

6. Geographical Changes

- 6.1 The LEP boundary review has highlighted positive changes that affect the Growth Hub.
- 6.2 In May 2020, Rutland announced its plan to become part of the Greater Lincolnshire LEP with immediate effect. Since then the Growth Hub have been working to integrate support for Rutland businesses within the Growth Hub. However there remains constraints around the ERDF funded activity that makes Rutland businesses ineligible for this support, so there will be a period where Rutland businesses will not be able to access the full support that businesses in the rest of Greater Lincolnshire can access. The Growth Hub used some of the BEIS core funding to employ an additional Growth Hub adviser to cover the Rutland area.
- 6.3 In April 2021, North and North East Lincolnshire joined the Greater Lincolnshire LEP, and we have undertaken extensive work with our GLLEP colleagues to analyse the impact of this and the actions that needed to be taken. Amendments to the website to reflect the boundary change have been made, including adding new adviser biogs. Full team meetings have taken place to welcome the advisers and all have undertaken the required training on systems and processes. The Humber led ERDF provision is still in place and there is therefore a seamless changeover in terms of on-going relationships with clients. We will continue to work with the Humber Adviser teams to continue integration over the coming months.

7 Business Support Simplification

- 7.1 The growth hub has a responsibility to ensure coordination across the business support offers. The business support landscape is complex and over that last 7 years we have sought to ensure that there is a range of complementary business support offers that offer a ladder of progression from pre start light touch support through to bespoke sector and scale up provision. Extensive work has been undertaken to ensure that all the ERDF programmes sit under the Growth Hub umbrella and we will continue to join up the future programmes coming out of the Town Fund, Community Renewal Funding and UK SPF.

8 Business Lincolnshire Growth Hub Key Performance Outcomes

Indicator	Local KPIs (where set by the LEP)	Annual Total (1 April 2020 – 31 March 2021)	Cumulative Total (since launch of Growth Hub)
Number of businesses that have received 'light touch' triage, information and/or signposting support (excluding website traffic)		2794	19,627

Paper 3 - Impact of the Lincolnshire Growth Hub & Annual Report 20-21

Number of individuals ^[1] that have received 'light touch' triage, information and/or signposting support (excluding website traffic)		570	2946
Total number of unique visitors to Growth Hub website		60,189	168,413*Correction Previously quoted unique 'sessions'
Number of businesses receiving 'medium intensity' information, diagnostic and brokerage support		658	5000
Combined turnover (amount £) of businesses receiving 'Medium intensity' information, diagnostic and brokerage support.		£908,894,153.00	£3,202,263,805.61
Combined employee numbers (FTE) of businesses receiving 'Medium intensity' information, diagnostic and brokerage support.		5749	23,713.12
Number of businesses receiving 'high intensity' support e.g. account management / intensive support directly provided by the Hub or partner organisation		589	3714
Combined turnover (amount £) of businesses receiving 'High intensity' support i.e. sustained support and using significant Growth Hub resource.		£598,077,646.01	£3,641,283,740.50
Combined employee numbers (FTE) of businesses receiving 'High intensity' support i.e. sustained support and using significant Growth Hub resource.		5417	14,957.50

^[1] Number of businesses and individuals are both required as (for example) several individuals from the same business may attend an event; may contact a Growth Hub separately via different routes on different issues.

Paper 3 - Impact of the Lincolnshire Growth Hub & Annual Report 20-21

Number of businesses receiving 'Medium' and 'High intensity' support that, have the opportunity, ambition and greatest potential to grow (including Scale-Ups)		21	144
Total number of individuals who been helped to start a business		82	1169
Number of businesses referred to a mentoring programme (combined figure for 'Medium' and 'High' intensity interventions only)		23	223
Number of businesses referred to a skills or training programme (combined figure for 'Medium' and 'High' intensity interventions only)		96	550
Number of businesses referred to a finance and/or funding programme (combined figure for 'Medium' and 'High' intensity interventions only)		47	906
Number of businesses referred to an innovation and/or R&D programme (combined figure for 'Medium' and 'High' intensity interventions only).		13	75
£Private sector match secured (where linked to Growth Hub)		£2,943,614.62	£8,010,366.60
Number of jobs created		195	
Number of jobs safeguarded		386* new measure for 2020	

Figures from April 2022 to March 2021	Number
ERDF Grants approved - SBG2 and Kickstart	386
Total value of Grants Paid	£1,210,780

Paper 3 - Impact of the Lincolnshire Growth Hub & Annual Report 20-21

Private Sector Match Secured	£698,011
------------------------------	----------

Figures from April 2022 to March 2021	Number
Facebook Likes	1354
Twitter followers	6028
Linked in	1027

9 Customer Satisfaction

9.1 In line with the requirements of the BEIS 2020-2021 'Metrics and Evaluation Framework' for 'medium' and 'high' intensity interventions, the following results have been achieved.

"How satisfied or dissatisfied are you with the quality of this service?" rated on a five-point scale.

1/5 (very dissatisfied)	2/5	3/5	4/5	5/5 (very satisfied)	Total
9	10	57	159	243	478

84% of respondents were with either satisfied or very satisfied

"How likely would you be to recommend this service to a friend/colleague", rated on a standard five point scale?

1/5 (very unlikely)	2/5	3/5	4/5	5/5 (very likely)	Total
6	2	12	140	307	467

95% of respondents likely would you be to recommend this service to a friend/colleague.

9.2 It should be noted that the Growth hub monitors Customer satisfaction from all the support elements from light touch to intensive support; advisory support, workshops, support packages, website content. This is measured via email to an online survey, follow up, telephone feedback and event evaluation forms.

9.3 Our procured Evaluation partner undertakes follow up evaluation with clients that have received at least 3 hours of support. The results are summarised in a bi-monthly report. These reports provide Business Lincolnshire with up-to-date information and key insights around beneficiaries' experience of and views towards the Growth Hub

Paper 3 - Impact of the Lincolnshire Growth Hub & Annual Report 20-21

service, in addition to key barriers relating to their business and to accessing support. The reports also provide recommendations as to how the delivery of the Growth Lincolnshire programmes and services provided by the Growth Hub could be improved. The bi-monthly reports allow the information and key insights to be provided in 'real time', supporting the Growth Hub to make continual improvements to the delivery of the Growth Hub to ensure it remains relevant and fits key business needs.

10 Future Plans for 2020/21

- Delivery of the Growth Hub/ LEP Community Renewal Bids (if successful) Green Lincolnshire, Digital Lincolnshire and Entrepreneurs Academy
- Give individuals enhanced support to start their own business
- Influence businesses to adopt decarbonisation practices / net zero support toolkits/ support offers
- Further develop the growth hub's globalisation offer/new market development
- Support the development of the Tourism Sector Deal and the business support requirements for the visitor economy
- Promote the digitalisation support offer to traditional industries
- Bring the ScaleUp business community together in with an Alumni event/ make direct connection with innovation support offers
- Flagship Events - Meet the Buyer Food Industry, Accessing Procurement Opportunities

11 Conclusion

11.1 The LEP's Growth Hub is performing well and continues to provide responsive services and has achieved excellent results since its inception April 2015. Satisfaction levels and feedback reported from clients is also good. Despite the pandemic the impact in terms of job creation is excellent and this has been enhanced due to growth hub clients accessing advisory support and grants to innovate and pivoting their business model in order to survive and grow.

Paper 4 - Policy and Research

Publication	GL LEP Public Paper (published)				
Meeting date:	28 th May 2021				
Agenda Item:	4				
Item Subject:	Policy and Research priorities 2021/22				
Author:	James Baty				
For:	Discussion	X	Decision	X	Information

1 **Overview**

- 1.1 This paper sets out the proposed priorities and work plan for the Policy and Research area of the LEP for 2021/22. It relates directly to the agreed Board priorities following the strategy session in December and subsequent work of the working group, as presented in papers on the 23rd March.
- 1.2 The paper also reflects on outputs from 2020/21 and areas in which the work stream for the area has had to adapt.
- 1.3 This paper is accompanied with a short slide pack setting out the 2021/22 plan.

2 **Review of 2020/21 Activity**

- 2.1 Through 2020, the LEP assumed a leadership and coordinating position in Greater Lincolnshire for economic wellbeing; pausing much of the 'business as usual' activity currently whilst in the response phase. This included LEP and LCC jointly chairing the Business Cell of the Lincolnshire Resilience Forum.
- 2.2 Key changes to the work plan included deferral of the Local Industrial Strategy implementation and significant upscaling and leadership of local intelligence through the Greater Lincolnshire Business Intelligence Unit as detailed in paper 2, 29th April 2020.
- 2.3 In response to covid-19, Greater Lincolnshire LEP led the development of the Greater Lincolnshire Plan for Growth on behalf of the Lincolnshire Resilience Forum Business and Economy Group; a 1-5 year plan of actions to help meet the objectives of the Local Industrial Strategy and address impacts that the pandemic had on the economy, released as a soft publication in April 2021 (see 3.2 for forward plan).
- 2.4 The Local Industrial Strategy was published as a final draft document in January 2021. Changes to Government policy has resulted in the abolition of the Industrial Strategy Council, and subsequent launch of Build Back Better: Plan for Growth to effectively replace the Industrial Strategy. Much of what was in the Industrial Strategy is reflected in the new plan with skills, innovation, infrastructure, business support, place within the context of levelling up and net zero key themes throughout. This change will enable us to proceed more freely with our plans to bring the Protecting, Progressing Prospering: Greater Lincolnshire's Economic Plan for Growth forward. Partners remain in agreement that our shared ambitions and vision to drive food valley, decarbonisation defence and freeports economic growth across Greater Lincolnshire.
- 2.5 In April 2021 the LEP released our first Local Skills Report. The report is part of our funding requirement for the Department for Education and provides a strong foundation to support the development of the Skills Investment Plan. The Local Skills Report sits on a large, robust and DfE agreed locally orientated evidence base which was developed internally during early 2021.

Paper 4 - Policy and Research

- 2.6 The development of strong evidence bases to underpin the Local Industrial Strategy, Plan for Growth and Local Skills Report has been ongoing with Local Skills Report and LIS evidence bases now published. A local economy dashboard is currently in development and is due to be completed by the end of June 2021.
- 2.7 In addition to strategic plans and underpinning evidence bases, there have been a number of programmes around research and intelligence briefing to key stakeholders including:
- Leading the production of weekly intelligence reports to BEIS/CLGU and LRF relating to economic climate, feeding intelligence from multiple partners such as Growth Hub advisors, business representative organisations, local authorities and destination marketing organisations amongst others.
 - Production of 15 MP Briefings, supporting the MP engagement programme.
 - Delivery of 7 business roundtables; hosting 51 businesses as part of the LEP Business Round Table programme.
 - Provision of regular partnership briefings with Chamber Connects, Financial Intermediaries forum, East Midlands LEP's and Midlands Engine Observatory

3 Policy and Research Plan 2021/22

- 3.1 The policy and research plan for 2021/22 can be broken down into 3 broad pillars. The pillars are:
- Delivery of Strategic Objectives
 - Supporting game changers and major sector opportunities
 - Future proofing our evidence base

There is strong alignment with the LEP Priorities for the year as set out through the priorities working group, namely: (1) Game changers, (2) covid19 revival, (3) international profile and trade, and (4) the strengthening of the LEP.

3.2 Delivery of strategic objectives

- 3.2.1 *Lead, deliver and embed the Greater Lincolnshire Plan for Growth and Implementation Plan:* A programme approach will be taken to carry forward the actions identified within the Plan for Growth, linking in with lead partners.

We will develop and manage a programme of Greater Lincolnshire revival plan priority actions on behalf of partners. The programme will be flexible to change and reviewed quarterly in terms of progress and in terms of additions or amendments. We will work closely with lead partners to ensure the actions are delivered and provide quarterly monitoring reports relating to progress against the plan.

- 3.2.2 *Provide response to national policy such as national Plan for Growth, Levelling Up, LEP Review and support local bids to funds such as Community Renewal Fund, Levelling Up Fund and UK Shared Prosperity Fund:*

As the national policy landscape changes over the coming year we will need to be in position to adjust flexibly in order to respond and ensure that Greater Lincolnshire capitalises on any potential opportunities that are forthcoming.

We will support local bids into current and subsequent funding calls through provision of evidence and a strategic framework. We will respond to Government

Paper 4 - Policy and Research

policy relating to economy and business with the voice of the local business community.

- 3.2.3** *Continue to provide a centralised intelligence voice for Greater Lincolnshire in to Government, via direct intelligence reports, local MP Briefings and ongoing collaboration with business representative organisations:* Greater Lincolnshire LEP has been the local lead partner in the provision of business and economic intelligence in to HMG and across to local partners, MPs and business.

This position was further embedded during the response phase of the pandemic; and will be a position the LEP can lead going forward on behalf of local partner organisations. Representation extends to the Midlands Engine as a partner of the Midlands Engine Economic Observatory.

We will deliver weekly intelligence briefings to partners and to colleagues in Whitehall as well as providing briefings for the MP engagement programme and continue our work in partnership with Business Representative Organisations.

3.3 Supporting our gamechangers and major sector opportunities

- 3.3.1** *Develop two cluster plans relating to clean growth and defence and cyber security with respective sub-committee and councils.*

We will work together with the Defence and Security Advisory Board and Energy Council to develop cluster plans.

- 3.3.2** *Provide strategic support to the UK Food Valley ambition.*

We will provide strategic and evidence base support for the UK Food Valley.

- 3.3.3** *Through the Greater Lincolnshire Plan for Growth, oversee the progress of the actions relating to our major sectoral opportunities.*

We will work to further develop our Health and Care, Visitor Economy, Ports and Logistics and Manufacturing strategic priorities in line with the Greater Lincolnshire Plan for Growth.

3.4 Future Proofing Our Evidence Base

Through 2020, the LEP has taken great strides in forming a strong partnership based intelligence community spanning local authorities, business representative organisations, Government departments and educational institutions as well as partners in the Midlands Engine and LEP Network.

In order to maintain momentum we will be future proofing our baseline economic evidence base, making it live, interactive and publically available through PowerBI. This evidence base will act as an economic monitor as well as supporting our strategic documents on an online platform.

Following implementation of the economic evidence base, we will update the Local Skills Report evidence base onto this platform for November 2021 publication and conduct our Plan for Growth programme monitoring using this platform.

Paper 4 - Policy and Research

3.4.1 In addition to the work on evidence base, we will commission a paper exploring levelling up and what it means for Greater Lincolnshire. This will build our local view on the forthcoming White Paper on Levelling Up announced in the Queens Speech. It will outline our position and areas where we can maximise opportunity.

3.4.2 We will support the production of a second Local Skills Report for publication in November.

4. Resources

4.1 During 2020/21 the activity within the Policy and Research area was delivered by 1 FTE post - Policy and Research Manager and 0.2 FTE Director of Policy (joint post with the University of Lincoln). This was achieved via commissions and support from other team members.

4.2 Due to the expanded remit and the strengthening of the LEP, we were able to recruit an Economic Analyst in January 2021 to predominantly lead the development of our skills evidence bases and to provide analytical capacity within the team to support bids, briefings and ad hoc queries.

4.3 In addition, following agreement from Board, we will recruit a 2 year fixed term Policy and Programme Officer to oversee the delivery of the actions within the Plan for Growth, to develop a programme and monitoring framework and to be the liaison with lead partners throughout.

4.4 The resources in the team will therefore consist of 3.2 FTE and a research budget of £50,000 for 2021/22.

4.5 Specific deliverables with the year will be:

- Oversight and reporting on the Economic Recovery Plan
- A Greater Lincolnshire Skills Strategy and refreshed evidence base
- A levelling up discussion paper
- A defence and cyber security cluster plan
- A Clean growth cluster plan
- A strategy, research, and intelligence function for the LEP

5. Timeline

5.1 Paper X.1 highlights the activities outlined in this plan in diagrammatic form, and includes an indicative timeline. The plan will remain flexible to changing demands should this be required following major policy announcements.

6. Recommendation

6.1 That the Greater Lincolnshire LEP Board

- Discusses and approves the Policy and Research plan priorities for 2021/22 as set out in this paper and presentation.



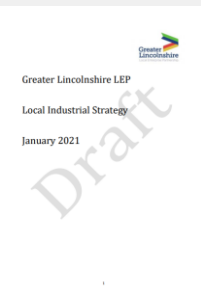
Policy and Research 2021-22 Plan

May 2021

Policy and Research area in 2020/21

In 2020/21 we have....

Developed strategies and plans in full partnership...



Locally agreed Draft LIS
Jan 2021

..built on strong evidence bases

LIS Evidence base (complete
2019/20)

Collaborated with, and supported networks and partners through covid19

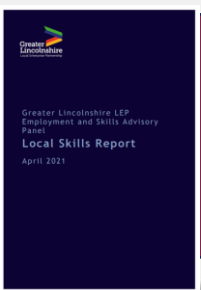
Regular partner economic briefings:
Chamber Connects
Financial Intermediaries
Midlands Engine Observatory



Greater Lincolnshire Plan for
Growth (Revival Plan)
April 2021

- Led LRF Economic Intelligence
- Development of evidence base (ongoing)

58 Weekly intelligence reports to
BEIS/CLGU and LRF



Local Skills Report April 2021

Local Skills Report evidence base
April 2021

15 MP Briefings

7 Business Roundtables; 51
businesses

Policy and Research plan for 2021/22

Delivering our strategic objectives

Lead, embed and deliver our Greater Lincolnshire Plan for Growth and Implementation Programme

National Policy Response:

- Plan for Growth
- Levelling up
- LEP Review
- CRF/UKSPF/LUF

Continuation of Briefings:

- MPs
- Business Representative Organisations
- Government Intelligence Reports

Supporting our gamechangers...

UK Food Valley support

Produce a Clean Growth Plan

Defence and Cyber Security Cluster Plan

Freeport

Health and Care

Visitor Economy

Manufacturing

Future proofing our evidence base

In house BI Dashboard development and rollout:

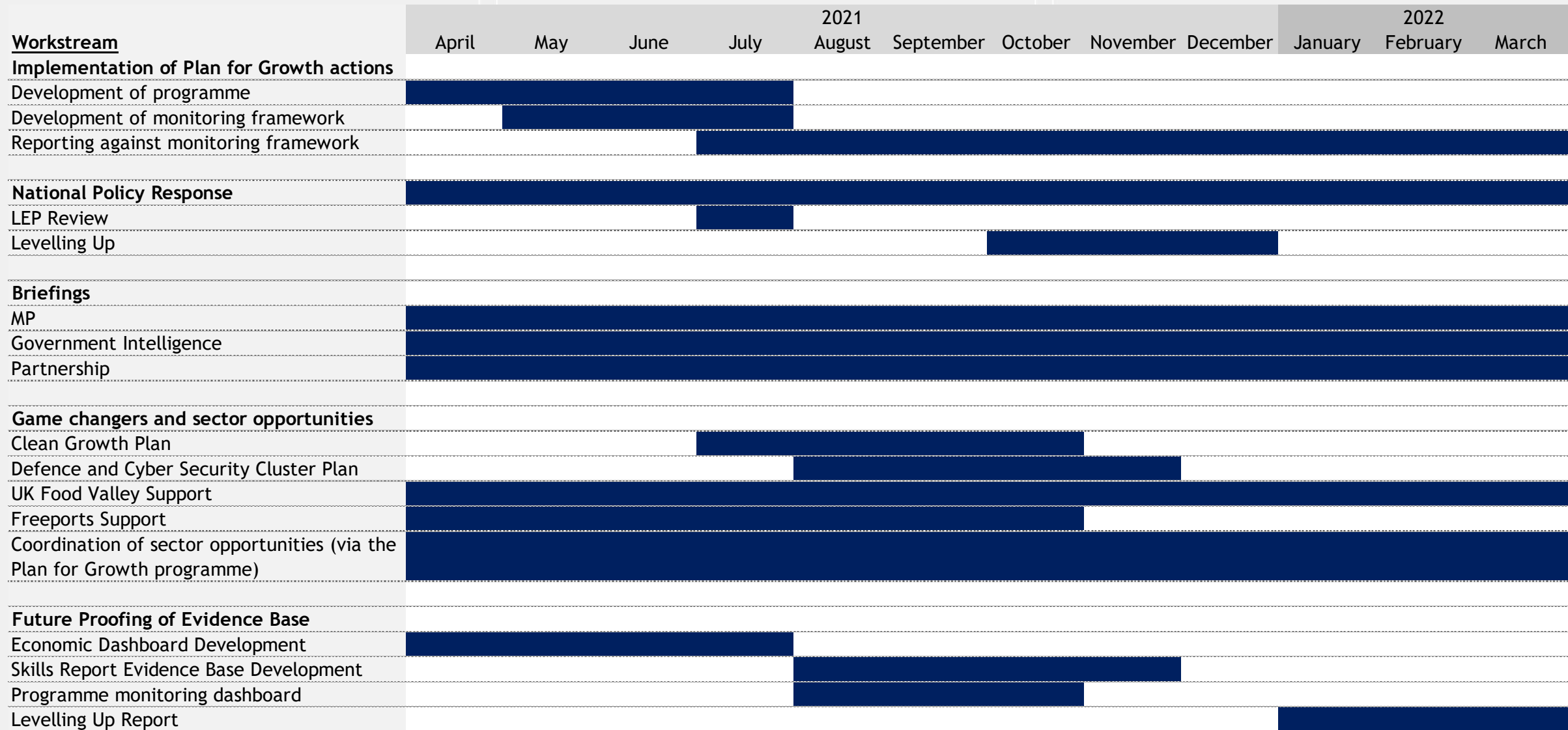
- Economic Monitor
- Plan for Growth Evidence base
- Skills Report Evidence base
- Programme monitoring framework
- Support international profile

Levelling up report

LEP Priority Alignment 2021/22

Priority 1: Game Changers	Priority 2: Covid19 Revival	Priority 3: International Profile and Trade	Priority 4: Strengthening the LEP
Provide strategic and intelligence support to UK Food Valley Ambition	Lead, embed and deliver our Greater Lincolnshire Plan for Growth and Implementation Programme	Support Team Lincolnshire and Humber inward investment priorities	National Policy Response: <ul style="list-style-type: none"> • Plan for Growth • Levelling up • LEP Review • CRF/UKSPF/LUF
Develop Clean Growth Plan with LEP Energy Council	Co-ordinate sector opportunities and cluster plans	Research opportunities for onshoring supply chains disrupted by EU Exit	
Support implementation of Humber Freeport	Develop a long term solution to economic dashboard and intelligence delivery		
Support the development of Defence and Cyber Security Cluster Plan			

Timeline 2021/22





Lancaster House | 36 Orchard Street
Lincoln | LN1 1XX

T 01522 550540

E greaterlincslep@lincolnshire.gov.uk

🐦 [GreaterLincsLEP](#)

Paper 7 – Communications Plan

Publication	Public Paper (published)					
Meeting date:	28 th February					
Agenda Item:	7					
Item Subject:	LEP Communications Impact and Forward Plan					
Author:	Kate Storey					
For:	Discussion		Decision		Information	X

Recommendation

The LEP Board is asked to note progress on comms and engagement during the year, and discuss the forward comms plan for 2021/22.

Background -

The work of the Greater Lincolnshire LEP is to promote the Greater Lincolnshire and the partnership with key stakeholders and audiences (regional, national, and international) and ensure that the partnership is visible, respected, and influential. Greater Lincolnshire LEP needs to be seen and recognised as a Greater Lincolnshire champion, and encourage others to think about a Greater Lincolnshire economic geography.

Resources -

In 2020/21, communications within the team was operating with 0.75 FTE, and two small external contracts for PR, design and website, with a core budget of £59,912.47. In 2021/22, the LEP Board has already approved an additional £40,000 from reserve for comms activity, which will increase comms resource to 1.75 FTE

LEP comms impact in 2020/21

During the year, the reach and impact of the partnership has grown significantly, some highlights are:

LEP

- LinkedIn and Facebook page engagements have increased significantly at +132% and +504% respectively now 6909 follower on twitter, and 2570 on LinkedIn - and growing. Facebook 870 and 1000 newsletter sign ups.
- Website had 42,919 unique visitors visiting 150,942 total page views - most popular sections are; What's New/ Boards/ Priorities and Plans/ Funding and Projects
- 100 plus news stories during the year
- Database registrations - plus 20%
- 31 speaking engagements during the year
- 10 roundtables

Items of media coverage	780
Average per day	2.3
AVE value of coverage	£642,660

<i>Annual output</i>	<i>Target</i>	<i>Actual</i>
Press Releases	27	30
Blogs	7	9
Press columns	1	5
COVID-19 newsletters	1	11
Web news stories	85	100

Careers & Jobs Fair

- Welcomed over 4,000 visitors to the live events
- Over 140 exhibitors (local employers, education and training providers and support services).

Paper 7 – Communications Plan

- C.750 visitors have visited each online fair, with c.70 exhibitors participating at each event.

LRF (Lincs Resilience Forum)

- 62 weekly business/economy focused newsletter editions to date

Team Lincolnshire

- Hosted 47 Weekly Informal Virtual TLC (Team Lincolnshire Cares) Coffee Clubs
- Hosted 12 Formal Monthly Joint Webinars with Business Lincolnshire
- 18 Direct involvements from Team Lincolnshire ambassadors with influencing or development investment sites
- 127 Team Lincolnshire business to business collaborations

Business Lincolnshire

- 87 webinars
- #GoDigital20 flagship event
- 6023 twitter followers, 1347 likes on Facebook, and 1188 LinkedIn followers
- Between 4000 and 6000 monthly website users, many new due to Covid-19

Greater Lincolnshire LEP Communications Plan

The work of the Greater Lincolnshire LEP is to promote the Greater Lincolnshire and the partnership with key stakeholders and audiences (regional, national, and international) and ensure that the partnership is visible, influential, understood, and that the reputation is maintained and grown. This plan includes the amplification of LEP activity by both Team Lincolnshire & Business Lincolnshire but the board is asked to note that they develop and manage separate comprehensive communications plans.

Our 21/22 comms plan is as follows:

SCHEDULED			
	Item	Activity	Owner
APR 21	Monthly e-news: INFRASTRUCTURE & INVESTMENT	E-newsletter/ mini campaign/SM	KS
	Humber Freeport	PR/ E-news/ SM	KS
MAY 21	Monthly e-news: LINCOLNSHIRE VOICES	E-newsletter/ 2 week campaign/ SM	KS
	Offshore Wind Conference	Chair Speaker/ comms/ SM	KS
	Scale Up & Bus Continuity Week 17-21 May	Social media (SM)	KS
JUN 21	Monthly e-news: HALF-YEAR HIGHLIGHTS	E-newsletter/ mini campaign/SM	KS
	Economic Growth (Recovery) Plans launch & promotion	PR/ comms/campaign/ SM/ website	KS
	Website Refresh		
	Humber Business Week 7-11 June	Virtual event stall	Business Lincolnshire

Paper 7 – Communications Plan

	HPO Launch & promotion	PR/ comms/campaign/ SM/ website	Team Lincs
JUL 21	Monthly e-news: HEALTH & CARE	E-newsletter/ mini campaign/SM	KS
	UK FV Launch	Launch of UK FV	
	AGM/ Annual Report	Virtual event platform/ PR/ SM	KS
AUG 21	Monthly e-news: MANUFACTURING	E-newsletter/ mini campaign/SM	KS
SEP 21	Monthly e-news: ENERGY	E-newsletter/ mini campaign/SM	KS
	FEZ Phase 2 promotion	PR/ comms/campaign/ SM/ website	Team Lincolnshire
OCT 21	Monthly e-news: FOOD	E-newsletter/ mini campaign/SM	KS
	UKFV campaign	PR/ comms/campaign/ SM/ website	Team Lincolnshire
	Team Lincolnshire stand alone website	PR/ comms/campaign/ SM/ website	Team Lincolnshire
	Lincolnshire Day 1 Oct	PR/ comms/ SM	All
NOV 21	Monthly e-news: BUSINESS SUPPORT	E-newsletter/ mini campaign/SM	KS
	National Budget and Levelling up Response	Public Affairs	
	LEP Conference 2 Nov	PR/ comms/campaign/ SM/ website	
DEC 21	Monthly e-news: XMAS ANNUAL HIGHLIGHTS	E-newsletter/ mini campaign/SM	KS
JAN 22	Monthly e-news: EMPLOYMENT & SKILLS	E-newsletter/ mini campaign/SM	KS
	Energy Saving Week (?)	Social media (SM)	KS
FEB 22	Monthly e-news: TOURISM & HOSPITALITY	E-newsletter/ mini campaign/SM	KS
	National Apprenticeship Week 8-14 Feb	Social media (SM)	KS
MAR 22	Monthly e-news: PORTS & CONNECTIVITY	E-newsletter/ mini campaign/SM	KS
	Careers Week 1-6 Mar	Social media (SM)	KS
	Healthcare Science Week (?)	Social media (SM)	KS
ROLLING			
	Food Security Bulletin (monthly)	Direct Marketing/ SM	KS
	Career & Jobs Fairs (monthly)	PR/ comms/ SM	NP
	LRF (Lincolnshire Resilience Forum) Weekly Biz/Econ Bulletin	Direct Marketing	KS

Paper 7 – Communications Plan

	Team Lincolnshire Coffee Club (weekly)	Virtual event platform	Team Lincs
	Business Lincolnshire weekly bulletin	Direct Marketing/ SM	Biz Lincs
	Team Lincolnshire weekly bulletin & monthly news	Direct Marketing/ SM	Team Lincs
	Weekly webinars & events programme linked to priorities	Direct Marketing/ SM	Biz Lincs
IN YEAR			
	Website refresh (completion June21)	Continued 80+pages update & new homepage	KS (intern)
	FEZ Investors campaign	PR/ comms/campaign/ SM	Team Lincolnshire
	LEP Impact Campaign	PR/ comms/campaign/ SM/ website	KS
	UK Food Valley microsite (completion Summer21)	Branding/ logo and microsite development	SLF/RC/KS
	UKFV launch & promotion (Summer 21)	PR/ comms/campaign/ SM/ website	SLF/KS
	New LEP website development (Dec21/Jan22)	New custom built site	KS
	Funding case studies	PR/ comms/ SM/ website	All

Greater Lincolnshire is a partnership organisation, existing to bring additionality to the work of partners and drive action against our clear areas of focus. To achieve the goal of adding value to partners' work and championing our area on the national and international stages, we need to be clear, regular, and inspiring in our communications with partners and wider audiences.

A key priority for 2021/22 is to build on the emerging key messages to amplify who we are and what we do, and what we achieve together.

Key deliverables are:

- Annual Report 2021 - July 21
- Refreshed website - Autumn /Winter21
- Increased social media especially LinkedIn and twitter
- Increased thought leaderships pieces - blogs/speaking engagement/conference etc
- EAN campaign on Careers locally - Autumn 21
- Impact campaign - Summer 21

PAPER 9 - GETTING BUILDING FUND & SLGF UPDATE REPORT

Publication	Public Paper (published)					
Meeting date:	28 May 2021					
Agenda Item:	9					
Item Subject:	Report on Getting Building Fund & Single Local Growth Fund Programme					
Author:	Halina Davies & Linsay Hill Pritchard					
For:	Discussion		Decision		Information	Yes

1. SUMMARY

- 1.1 The LEP Board is asked to note the progress made in delivery of the Getting Building Fund (GBF) Programme and Single Local Growth Fund (SLGF) Programme, and measures being taken to manage grant expenditure this financial year.
- 1.2 It is important for the board to understand claims and delivery against Q4 of the SLGF programme and contracting and expenditure progress for the GBF programme.

2. GETTING BUILDING FUND

- 2.1 The following table shows progress made on the GBF programme:

Scheme	Applicant	Grant Amount	RAG	Status
Centre for Innovation in Rural Health	UOL	£1,300,004	Green	Deed variation to contract completed. Project completed on site and fully paid.
Holbeach FEZ Phase 2	LCC	£6,367,839	Green	<p>Grant Funding Agreement completed and first claim paid.</p> <p><u>Hub Building</u></p> <ul style="list-style-type: none"> • Latest Project Plan shows the build programme ending on 07 March 2022. The Design Team have been asked to identify "pitch points" in the programme and areas where time could be recovered. • Site set up started on Tuesday 6th April in accordance with the enabling works programme. • Temporary connections have already been applied for to connect the site, i.e. sewers etc., this in turn will form part of the main permanent connection. • Installation of the Piling Mat (4th May) • Piling commencement (17th May) • Enabling works contract completion (25th June) <p>After this the Main Works Agreement (MWA) will be adhered to.</p> <p><u>Phase II Land</u></p> <ul style="list-style-type: none"> • The joint purchase by LCC and SHDC successfully completed on 31st March 2021 as planned.

PAPER 9 - GETTING BUILDING FUND & SLGF UPDATE REPORT

Killingholme Marshes Drainage Scheme	Able UK	£4,328,032	Amber	<ul style="list-style-type: none"> • Funding contract agreed with grant applicant; signed copies posted from Able UK on 20 May 21 however LEP and Accountable body signatures still need to be applied for the agreement to be legally confirmed. • A copy of the executed agreement with Network Rail still to be provided electronically but has as of 20 May been formally agreed between parties. • Works are progressing on the scheme at risk and currently remain on programme, with culvert works for the pumping station starting in August
Cycle Programme	GLLEP	£2,216,860	Green	<p>Grant Funding Agreement completed.</p> <p><u>A180 Westgate Section</u> The A180 Westgate scheme is progressing, there has been a slight delay due to a supply chain delay associated with the lamp columns but this has only had a minor impact on timescales. The contractor is getting on well, the excavation and laying of the sub-surface is all done, there's a few pieces of work to connect the street lighting to be done before the tarmac course is laid next month. Completion is on track for the end of June. After that the works will shift to the westbound side to install a new ramped access to Adam Smith St.</p> <p><u>Hobson Way Section</u> The cycleway scheme has been delayed due to the need to install a new utility connection for a major industrial site that is immediately adjacent to the new cycle link. These works will be complete next week and the contractor will be on site from 1 June, the programme is 6-8 weeks so this will be done by mid-end of July 2021.</p> <p><u>A1173 Section</u> The site of the new cycle link has been cleared and the necessary surveying of the site has been completed. The Engineering Design Team are currently drawing up the detailed design and are putting in place the necessary permissions to begin work on site in early Autumn. This one will be a 16 week (or so) construction period so we're working towards being finished (or thereabouts) by Christmas.</p>
Skills Capital Fund Programme	GLLEP	£7,899,175	Green	<p>Five Grant Funding Agreements completed. One Agreement still with applicants for review (ELITE).</p> <p>Projects remain on track and deliverable by March 2022.</p>

PAPER 9 - GETTING BUILDING FUND & SLGF UPDATE REPORT

Lincoln Science & Innovation Park Phase 2	LSIP Ltd	£3,430,090	Green	<p>Grant Funding Agreement completed. <u>Building 5B</u></p> <ul style="list-style-type: none"> RIBA 4 design to convert the building from its original 'generic' use to its defence requirement has been completed and the amendments have received consent from the planning office of City of Lincoln Council; Ground works are due to start W/C 24th May All subcontractor packages are now at the market - early returns have suggested that the final cost of the building will be £3.1m>£3.2m, within the cost envelope The programme suggests completion well before the end of March 2022 The building is fully let to a company who has decided to locate their UK HQ in Lincoln. They have grown from 2 to 20+ UK based employees and are expecting to create more than 80 jobs over the next 5-years on the LSIP site. <p><u>Enabling Works</u></p> <ul style="list-style-type: none"> Total Reclaims have been appointed to demolish the site and took possession of the site on 17th May with mobilisation commencing soon after. They have an 8-12 week programme to pull up and crush the slab in addition to the removal of any underground obstructions/ footings etc. All existing tenants of the site (car-parking) have had their leases terminated or have been moved off site. Tender returns from main contractors are expected by mid-June, with them taking control of the site immediately after Total Reclaims have completed their works package. Current programme suggests completion in mid-February 2022.
Fees 1%	GLLEP	£258,000	Green	Applied at programme level
Total		£25,800,000		

2.2 Good progress continues to be made with the GBF programme and quarterly targets have been contractually agreed with all grant recipients. The contracting target of £17.3m of the overall £25.8m grant programme by 31 March 2021 was exceeded by £1.29m. Total grant contracted as of 18th May is £20.05m.

2.3 GBF achieved claim spend of £2.8million with the remainder of the £12.9 grant in 2020/21 being achieved through offset as an agreed freedom and flexibility.

PAPER 9 - GETTING BUILDING FUND & SLGF UPDATE REPORT

2.4 Claims expected for GBF in Quarter 1 as per currently signed contracts are predicted as £2.082million releasing £1.165m in grant. Further claims are likely to be made on the remaining skills projects and the KMDS scheme having its funding agreement signatures completed and forecasts for the scheme this quarter being met accordingly (£1.29m would be retrospective costs already defrayed against the project).

3. SINGLE LOCAL GROWTH FUND

3.1 Project claims for the January 2020 to 31 March 2021 period have been processed. The Quarter 4 Dashboard is due to be submitted to government on Friday 28th May and is enclosed for sign off by the S151 Officer and Investment Board as Appendix A. The Board may wish to note the very positive position on outputs with all targets for the year being exceeded other than sqm of training/learning space. This output will be achieved overall on completion of the Digital and Professional Skills Centre currently in progress with Lincoln College.

3.2 In Quarter 4 there was some overall underspend totalling £2.2million and this was managed as agreed with reducing the drawdown of offset. The underspends in grant are mainly residual retentions on completed schemes where final bills are not expected until Quarter 1 of 21/22.

3.3 There also remains £8.6m to be spent from offset, and the bulk of this will be in 2021/22 as agreed with the Investment Board previously.

3.4 The table below shows the position of remaining SLGF as of 18 May 2021:

Growth Deal Programme Position Q2	SLGF Left to release	21/22	22/23
SLGF OFFSET	£8.6m	£7.977m	£.655m

Distribution of SLGF Offset	21/22	22/23
Unlocking Rural Housing	0.290	
Advanced Engineering R and D Centre - (The Bridge)	1.091	0.655
Grantham Southern Relief Road	4.400	-
Sleaford Growth	1.043	
A46 roundabout	0.506	
Northern Junction	0.104	
Europarc Fez	0.218	
Skegness Gateway	0.224	
DTLA	0.022	
Borderville	0.166	
Huttoft	0.113	
Total changes	£7.977m	£0.655m

4. LOCAL ASSURANCE FRAMEWORK (LAF)

4.1 There have been no recent changes highlighted by Government to the National Assurance Framework.

PAPER 9 - GETTING BUILDING FUND & SLGF UPDATE REPORT

4.2 Greater Lincolnshire LEP regards its LAF to be fit for purpose and it was signed off by the Section 151 Officer in February 2021. In light of the National LEP Review the LEP will reassess and update the LAF in autumn 2021 once any changes to the structure and focus of the LEP are identified.

4.3 There will be a clear governance role for Finance and Audit Committee in reviewing suggested changes and ensuring compliance with the NAF and local requirements accordingly.

5. CONCLUSION

5.1 The Board are asked to note the progress of the GBF and SLGF programmes and the excellent achievements already made through investment via SLGF, as demonstrated in Appendix B.

Growth Deal Dashboard

LEP Name **Greater Lincolnshire LEP**

This Quarter: **Q4_2021**



Deliverables Progress									
Housing	This Quarter	15-17	Financial Year						Total
			17-18	18-19	19-20	20-21	21-25		
Houses Completed	90	0	384	61	58	90	-	-	593
Forecast for year	47	-	384	61	58	47	3,413	-	3,963
Progress towards forecast	191%	-	100%	100%	100%	191%	-	-	15%
Jobs									
Jobs Created	85	0	218	332	44	292	-	-	886
Apprenticeships Created*	54	0	0	0	37	54	-	-	91
Jobs including Apprenticeships	139	0	218	332	81	346	-	-	977
Forecast for year	303	-	218	331	81	303	4,070	-	5,003
Progress towards forecast	46%	-	100%	100%	100%	114%	0%	-	20%
* Apprenticeships included within jobs totals prior to 2017									
Skills									
Area of new or improved floorspace (m2)	6,553	0	0	863	5,665	6,553	-	-	13,081
Forecast for year	8,023	-	0	863	5,665	8,023	0	-	14,551
Progress towards forecast	82%	-	-	100%	100%	82%	-	-	90%
Number of New Learners Assisted	1,061	0	378	830	442	1,061	-	-	2,711
Forecast for year	959	-	378	830	442	959	2,157	-	4,766
Progress towards forecast	111%	-	100%	100%	100%	111%	-	-	57%
Transport									
Length of Road Resurfaced	0.0	0.0	0.0	0.0	0.0	0.0	-	-	0.0
Length of Newly Built Road	285.0	0.0	0.0	0.0	0.0	285.0	-	-	285.0
Length New Cycle Ways	0.0	0.0	0.0	0.0	0.0	0.0	-	-	0.0

Project Name	Project RAG Ratings		Project Name	Previous Quarter Q3_2021	This Quarter Q4_2021
	Previous Quarter Q3_2021	This Quarter Q4_2021			
Grantham Southern Relief Road	AR	A	South Humber Infrastructure Investment Program	G	G
Boston Quadrant Infrastructure Programme	AG	AG	Gainsborough Growth phase 2	AG	G
Boole Technology Centre	G	G	Due Dilligence	N/A	N/A
Unlocking Rural Housing	AG	AG	Digital Technology Transport & Logistics Academy	AG	AG
Bishop Burton College Lincolnshire Showground	G	G	Huttoft Boat Shed Visitor Centre (0.240m)	A	A
Tentercroft Street Growth Corridor Phases 1 and 2	G	G	Borderville	AG	G
Lincoln Transport Hub	G	G	Centre of Rural Health	G	G
Go Skegness Sustainable Transport	G	G	Sleaford Growth Project Phase 2	AG	AG
Access to Employment Zones Phase 1	AG	G	-	-	-
Normanby Enterprise Park	G	G	-	-	-
Northern Roundabout Junction	AG	AG	-	-	-
South Humber Infrastructure Investment Program	R	AR	-	-	-
Lincolnshire Lakes Lake 1	N/A	N/A	-	-	-
Agri-Food Centre of Excellence	G	G	-	-	-
Holbeach Peppermint Junction	G	G	-	-	-
Scunthorpe Town Centre	G	G	-	-	-
A46-A15	AG	AG	-	-	-
Sleaford Growth Project Phase 1	AG	AG	-	-	-
Sutterton Roundabout	G	G	-	-	-
Grantham Technology and innovation Centre	G	G	-	-	-
Gainsborough Growth Phase 1	AR	A	-	-	-
Skills Capital Investment Fund	AG	AG	-	-	-
GL Centre of Medical Science	G	G	-	-	-
The Bridge - Advanced Engineering R and D Centre	A	A	-	-	-
Holbeach Food Enterprise Zone	AG	AG	-	-	-
SLGF Balance	N/A	N/A	-	-	-
Hemswell Food Enterprise Zone	N/A	N/A	-	-	-
Europarc Food Enterprise Zone	AG	AG	-	-	-
Skegness Gateway Scheme	AG	AG	-	-	-
Access to Employment Zones Phase 2	AG	G	-	-	-

Growth Deal Performance	Area lead comments
G	

Financial Progress							
LGF Award	2015-16	2016-17	17-18	18-19	19-20	20-21	Total
	£26,400,000	£39,863,787	£12,687,335	£8,733,858	£6,809,606	£18,153,052	£112,647,638
LGF Outturn							
This Quarter	Financial Year						Total
Actual	£ 9,062,908	£ 46,524,178	£ 14,181,938	£ 8,661,451	£ 14,718,344	£ 22,105,216	£ 106,191,127
Forecast for year	£ 24,924,755	£ 42,924,177	£ 14,181,937	£ 8,661,017	£ 14,718,777	£ 24,924,755	£ 105,410,663
Progress towards forecast	36%	108%	100%	100%	100%	89%	101%
LGF Expenditure							
This Quarter	Financial Year						Total
Actual	£ 8,508,554	£ 36,605,631	£ 8,304,579	£ 12,801,983	£ 21,206,379	£ 25,810,262	£ 104,728,834
Forecast for year	£ 29,463,838	£ 33,005,631	£ 8,737,800	£ 12,554,291	£ 21,557,351	£ 29,463,838	£ 105,318,911
Progress towards forecast	29%	95%	102%	98%	98%	88%	99%
Non-LGF Expenditure							
This Quarter	Financial Year						Total
Actual	£ 9,708,812	£ 45,471,567	£ 36,474,796	£ 30,859,218	£ 32,648,357	£ 54,458,835	£ 199,912,773
Forecast for year	£ 77,523,547	£ 45,131,335	£ 36,523,324	£ 31,571,072	£ 28,783,648	£ 77,523,547	£ 219,532,926
Progress towards forecast	13%	100%	98%	113%	70%	91%	91%
Total LGF + non-LGF Expenditure							
This Quarter	Financial Year						Total
Actual	£ 18,217,367	£ 82,077,198	£ 44,779,375	£ 43,661,201	£ 53,854,736	£ 80,269,097	£ 304,641,607
Forecast for year	£ 106,987,385	£ 78,136,966	£ 45,261,124	£ 44,125,363	£ 50,340,999	£ 106,987,385	£ 324,851,837
Progress towards forecast	17%	+105%	+99%	+99%	+107%	+75%	94%

Contractual Commitments (manual entry)							
	15-17	17-18	18-19	19-20	20-21	Total	
Forecast	£ 34,980,339	£ 15,315,589	£ 23,796,048	£ 18,356,359	£ 20,199,303	£ 112,647,638	
Actual	£ 36,605,631	£ 39,314,403	£ 14,382,865	£ 17,844,739	£ 4,500,000	£ 112,647,638	
Variance	+5%	+157%	-40%	-3%	-78%	+0%	

Commentary
 Following the conclusion of the Quarter 4 period there is some underspend across the board as expected due to the impact of Covid. Many of these are retention payments expected now to be released in quarter 1 of 21/22. The total payment for quarter 4 of just under £9million. All repaid monies have now been utilised and all that remains to be expended is a proportion of the offset figure (8.6million) of which £7.9m will be spent in 21/22 and £0.655m in 22/23 as shown below:
 21/22-
 Unlocking Rural Housing 0.290
 Advanced Engineering R and D Centre – (The Bridge) 1.091
 Grantham Southern Relief Road 4.400 -
 Sleaford Growth 1.043
 A46 roundabout 0.506
 Northern Junction 0.104
 Europarc Fez 0.218
 Skegness Gateway 0.224
 DTLA 0.022
 Borderville 0.166
 Huttoft 0.113
 22/23-
 Advanced Engineering R and D Centre – (The Bridge) 0.655
 The Accountable body will continue to monitor match funding and SLGF spend until the completion of the programme. As can be seen from the summary sheet many of the projects are now physically complete and we are beginning to see more outputs being achieved. This will be the focus on-going monitoring and we hope to produce a variety of case studies on the successful schemes. There is a positive position on outputs with all targets for the year being exceeded other than sqm of training/learning space. This output will be achieved overall on completion of the Digital and Professional Skills Centre currently in progress with Lincoln College.

Section 151 Officer Approved
 Name **Andrew Crookham**
 Signature
 Date 21st May 2021

PAPER 10 - GREATER LINCOLNSHIRE LEP PIPELINE REVIEW & UPDATE

Publication	Public Paper (Published)					
Meeting date:	28 May 2021					
Agenda Item:	10					
Item Subject:	Greater Lincolnshire LEP Pipeline Assessment					
Author:	Halina Davies (LEP)					
For:	Discussion		Decision	Yes	Information	Yes

1. SUMMARY

- 1.1 This paper provides the GLLEP Board with a summary of the recent pipeline call for schemes and subsequent assessment for pipeline status.

RECOMMENDATION

The Board is asked to note the outcomes of the overall pipeline analysis and endorse for publishing the new recommended pipeline list for Greater Lincolnshire shown in Appendix A.

2. BACKGROUND

- 2.1 The GLLEP Pipeline has been used to excellent effect over the last 5 years providing the basis for bid submissions for three rounds of Single Local Growth fund totaling £123.7m and Getting Building Fund totaling £25.8m. Given that CRF and LUF funding has over recent months been passed directly to Local Authorities to manage, it will be important for partners to note the high caliber of projects submitted to the GLLEP Pipeline and ensure it is used to best effect when considerations about funding allocations are being made.
- 2.2 A paper on the emerging Strategic Infrastructure Delivery Plan (SIDP) led by Lincolnshire County Council (LCC) and supported by strategic partners across Greater Lincolnshire was presented to the GLLEP Board on the 20th April 2021. Although projects recommended for the 2021 SIDP pipeline have been identified, the final more detailed SIDP document including gaps in analysis and provision will continue to be developed by LCC with an overview from the Greater Lincolnshire & Rutland Infrastructure Group over the coming months and will be published once completed alongside a broader infrastructure strategy for Greater Lincolnshire, exploring needs and gaps in relation to key areas of infrastructure, linked to economy and place, connectivity, climate, inclusion and health.
- 2.3 Non-Infrastructure related pipeline schemes submitted to the call were assessed for strategic impact by the LEP alongside an external consultancy. The external consultancy then independently carried out review of the economic case, deliverability and impact of the Outline Business Cases (OBC) provided during late April and early May 2021.
- 2.4 Greater Lincolnshire LEP is responsible for helping businesses increase productivity and innovation, creating new employment opportunities, and developing investment solutions that support this. The Greater Lincolnshire Economic Plan for Growth 'Protecting, Progressing, Prospering' sets out how this will be achieved alongside the Government's National infrastructure Plan and the Ten Point Plan for a Green Industrial Revolution.
- 2.5 The current published list of pipeline schemes was approved by GL LEP in February 2020 and can be reviewed on the GL LEP website here:
<https://www.greaterlincolnshirelep.co.uk/documents/gllep-pipeline-projects-by-theme-february-2020/>
- 2.6 The joining together of the two previously independent pipeline calls (GL LEP and SIDP) is regarded by local strategic partners as a positive move for many reasons,

PAPER 10 - GREATER LINCOLNSHIRE LEP PIPELINE REVIEW & UPDATE

including providing clear prioritisation to all stakeholders, particularly funding bodies.

3. REVIEW CRITERIA AND METHOD

- 3.1 The pipeline review criteria are based closely on the guidance in the Treasury's Green Book. This is important for future development of full business cases.
- 3.2 Tier 1 criteria relates to strategic elements of the outline business case (OBC). Tier 2 criteria relates to the economic case, deliverability and impact of respective projects. Tier 1 and Tier 2 can be reviewed in the LEP's Local Assurance Framework <https://www.greaterlincolnshirelep.co.uk/documents/local-growth-assurance-framework-february-2020/>
- 3.3 Projects have been separated into Category A (financially deliverable by end of 2024/25 on the basis of the relevant section of the OBC) and Category B (deliverable beyond 2024/25 on the same basis). There were forty-seven SIDP and forty-one non-infrastructure Category A projects and 14 Category B projects submitted.

4. ANALYSIS

- 4.1 Some authorities and organisations have reported that further development is in progress in order to submit appropriate OBCs for a future pipeline call. There is of course no stipulation that every area in Greater Lincolnshire and Rutland has to submit schemes to each pipeline call, but it will be important to understand why some areas and sectors have been omitted from the pipeline list on this occasion, and work with partners to ensure that new emerging ideas and proposals continue to be shared and noted in advance of any future calls. A pipeline call is a snapshot in time and projects will continue to evolve.
- 4.2 On the 20th April the GLLEP board identified a need to connect the pipeline work to a broader set of issues, challenges and opportunities, including:
- Digital connectivity;
 - Decarbonisation and climate change;
 - Inclusivity and inequality; and
 - Gaps around health and education.
- 4.3 Feedback on submissions will be provided to all those that have put forward pipeline proposals and the LEP Programme Manager is always happy to speak to individual project leads where requested to support continued development and strengthening of proposals.
- 4.3 GLLEP and LCC are also looking to organise a joint workshop in the autumn to help local and key stakeholders understand what a good OBC submission might look like.
- 4.4 The breakdown for submissions per area of non-infrastructure led schemes was as follows:

	Category A	Category B
Boston Borough	5	
East Lindsey	4	1
Lincoln	12	
North East Lincolnshire	3	1
North Kesteven	1	
North Lincolnshire	4	
South Kesteven	2	
West Lindsey	1	
South Holland	2	
Multiple Areas	7	1

PAPER 10 - GREATER LINCOLNSHIRE LEP PIPELINE REVIEW & UPDATE

Totals	41	3
--------	----	---

- 4.5 Combined with the SIDP submissions for infrastructure led schemes the overall pipeline call picture across Greater Lincolnshire and Rutland is therefore as follows:

	Category A	Category B
Boston Borough	6	0
East Lindsey	8	3
Lincoln	14	1
North East Lincolnshire	12	2
North Kesteven	8	3
North Lincolnshire	14	2
South Kesteven	5	1
West Lindsey	6	0
South Holland	2	0
Multiple or to be confirmed	13	2
Totals	88	14

- 4.6 As can be seen above there was a good spread of the 102 projects submitted from across Greater Lincolnshire to the GLLEP pipeline call, although none were specifically located in the Rutland area this time, with a high proportion (31) being identified in the high priority category.
- 4.7 High scoring projects highlighted in green in Appendix A scored well overall across all four areas of strategic fit, economic case, deliverability and impact. However it is important to note that many of these schemes still require further development work, design and planning considerations before they can be regarded as ready to progress for delivery.
- 4.7 There were also some high scoring medium priority schemes which have been highlighted in orange in Appendix A, many of which were regarded as strategically important and a good fit with the GL Economic Plan and four LEP Game Changers.
- 4.8 Unfortunately there were also a number of schemes submitted to the pipeline call that were missing a great deal of information or still require further development. Lower priority schemes based on the OBC submissions fell within the under 20 and under score category and are depicted in red in Appendix A. It is recommended that these schemes will not be added to the GLLEP pipeline at this time.

5. LINKS TO GREATER LINCOLNSHIRE ECONOMIC PLAN

- 5.1 The new Greater Lincolnshire Economic Plan (Covid Revival Strategy) is called *Protecting, Progressing, Prospering*. It focuses on protecting our businesses and communities; progressing with our plans for good growth in Greater Lincolnshire, while acknowledging that Covid-19 changes many parameters and requires new approaches; and prospering, emerging from this difficult period with stronger foundations and better outcomes for residents and businesses.
- 5.2 The Strategy identifies priorities for years 1 to 5 and it is important to consider pipeline submissions in the context of this vital strategic document for Greater Lincolnshire and Rutland. The relationship between many of the pipeline projects submitted and these priorities has been considered and whilst not all schemes can be regarded as a natural fit to the Greater Lincolnshire Economic Plan for Growth priorities, this does not take away from their strategic importance and relevance to other policies and local plans.

PAPER 10 - GREATER LINCOLNSHIRE LEP PIPELINE REVIEW & UPDATE

6. ALIGNMENT WITH CURRENT FUND PRIORITIES AND BIDS

- 6.1 There have been a number of recent announcements by government on funding to support recovery and growth for our communities. These include Levelling Up Fund, Community Renewal Fund, Towns Fund and the High Street Fund, with more announcements expected on UKSPF in the summer.
- 6.2 Officers involved in the GLLEP pipeline review recommend that alignment of GLLEP schemes to existing investment priorities under these and emerging programmes across Greater Lincolnshire should also be considered where possible. This helps to ensure a cohesive and strategic investment package for the area that builds on local strengths and needs.

7. NATIONAL POLICY CONTEXT

- 7.1 Over the next 12 months there will be a new government led Innovation Strategy as well as strategies for net zero, hydrogen and space. The Government will also develop a vision for high-growth sectors and technologies, putting the UK at the forefront of opportunities and giving businesses the confidence to invest, boost productivity and enable our net zero transition. The new industrial decarbonisation strategy will be steering many of our local priorities going forward, and we await with interest the White Paper this autumn focused on devolution, recovery and levelling up.
- 7.2 It has been interesting to review how local schemes will look to respond to new and emerging national policy. Some OBCs made very clear and detailed correlations between their projects and the wider policy context, however this varied significantly across submissions.

8. COMMENTS FROM THE ACCOUNTABLE BODY

- 8.1 The pipeline call was conducted in line with the mechanisms set out within the Local Assurance Framework and aligned to governments Green Book appraisal. The exercise has positively shown a strong cohort of projects across the identified sectors. We concur with the need to help applicants understand how to further enhance their business cases in order for projects in our local area to pass government scrutiny should further funding become available. As in previous pipeline calls, many of the submission came from the public sector and educational institutions. The Board may wish to consider further publicity opportunities in encouraging a greater number of submissions from the private sector.

9. CONCLUSIONS

- 9.1 The pipeline projects highlighted in this summary report are a starting point to the progression of potential future full business cases.
- 9.2 High scoring projects were numerous and it is good to see the level of ambition and growth potential being developed across the Greater Lincolnshire LEP area. Having a strong pipeline that partners can consider when funding opportunities arise is extremely important.
- 9.3 There will be clear links between local and national strategies and emerging and existing funding that Greater Lincolnshire will wish to explore further now that the full GLLEP pipeline list has been confirmed. This will undoubtedly include liaison with a number of key stakeholders and agencies.

10. RECOMMENDATION

- 10.1 It is recommended that the GL LEP Board endorses for publishing the updated 2021 GL LEP Pipeline.
- 10.2 Schemes to be presented by theme on the GL LEP website as per previous GLLEP Pipeline tables.

APPENDIX A - GREATER LINCOLNSHIRE PIPELINE MAY 2021 (NOT RANKED)

HEALTH & CARE							
Project	Applicant	Cat	Scores	Theme	Delivery Timescale	Overall C	Grant F
Project Lifesaver	LIVES	A		Health & Care	Apr 21 - Aug 23	5.99	3
Health and Sciences Centre	Stamford College	A		Skills/Health & Care	Sep 21 - Dec 22	6.14	3.07
Health & Wellbeing Centre	Lincoln College	A		Skills/Health & Care	Apr 21 - Jun 22	1.21	0.85
Centre for Innovation in Digital & Dispersed Healthcare	UOL	A		Health & Care/Digital	Jun 21 - Feb 23	19.1	11.5
Health and Social Care for the Future	DN Colleges Group	A		Health & Care	Jul 21 - Oct 21	2.23	1.3
Nourishing Lincoln	The Lincolnshire Food Part	A		Health & Care	Jan 22 - May 24	0.95	0.84
Lincolnshire Centre for Rural Ageing Excellence	YMCA Lincolnshire	A		Health & Care	Sep 21 - Mar 23	7.5	0.64
YMCA Humber Project Regeneration	YMCA Humber	A		Health & Care	Sep 21 - Oct 22	2.6	1
Integrated Health, Innovation & Emergency Services Hub	Brindley Axe (NLC)	A		Health & Care	Jan 22 - Dec 22	13.12	4.3
Total						58.84	26.5
AGRIFOOD							
Project	Applicant	Category	Scores	Theme	Delivery Timescale	Overall C	Grant F
Farm Resilience Centre	Bishop Burton College	A		Skills/Agrifood	Oct 21 -Aug 22	2.88	2.3
Fresh Produce Research Centre	UOL	A		Agrifood/Business & Innovation	Aug 21 - Aug 24	8.1	4.88
Equipping the future of Agri-food	UOL	A		Agrifood & Innovation	Jan 22 - Dec 24	1.63	0.75
Lincolnshire Glasshouse technology Res	UOL	A		Agrifood/Business & Innovation	Jul 21 - Dec 24	1.27	0.76
AB Potato Grading & Cold Stores	Albert Bartlett Ltd	A		Agrifood & Innovation	Aug 21 - Jun 22	12.8	5
Future Proofing the Agri-food Industry	UOL	A		Agrifood	Oct 21 - Dec 24	28	16.7
Elsoms Seeds R&D Centre	Elsoms Seeds	A		Agrifood & Innovation	Jun 21 - Nov 23	7.72	3.86
Rethinking Farmed Peatlands	The Lapwing Estate Ltd	A		Agrifood	Apr 21 - Mar 22	0.1	0.05
Total						62.5	34.3

CREATIVE INDUSTRIES							
Project	Applicant	Category Scores		Theme	Delivery Timescale	Overall Cc	Grant F
Barbican Creative Production Hub	UOL	A		Creative Industries	Arp 22 - Mar 24	2.83	0.85
Creative Workspace	NELC	A		Creative Industries	Apr 23 - Mar 25	1.3	0.99
Hospitality, Events, Arts & Tourism (HEAT) College	Lincoln College	A		Skills/Creative Industries	Sep 21 - Sep 22	2.47	1.73
Lincoln Drill Hall: Act 3	Lincoln College	A		Skills/Creative Industries	Jan 21 - Jan 22	0.9	0.63
					Total	7.5	4.2
BUSINESS & INNOVATION							
Project	Applicant	Category Scores		Theme	Delivery Timescale	Overall Cc	Grant F
Logistic Research Centre for Digital and Sustainable Transformation	UOL	A		Business & Innovation	Oct 21 - Mar 25	6.5	3.9
Business Productivity Growth and Innovation	UOL	A		Business & Innovation	Aug 21 - Sep 26	10.4	6.24
Greater Lincolnshire Formulation Hub	UOL	A		Business & Innovation	Jun 21 - Dec 24	6.1	3.6
Sleaford Moor Enterprise Park (SMEP)	NKDC	A		Business & Innovation	Apr 21 - Mar 24	56	6.2
Somerby Park	WLDC	A		Business & Innovation	Apr 22 - Dec 23	5.69	2.55
Centre Of Skills for Employment & Enterprise	Grantham College	A		Skills/Business & Innovation	Apr 21 - 2023/24	6.14	5.5
Business Lincolnshire Growth Hub	LCC	A		Business & Innovation	Apr 22 - Mar 25	7.75	5.48
5G4GIE	ORE Catapult	A		Business & Innovation	Oct 21 - Mar 23	7.2	2.9
Europarc III North East Lincolnshire FEZ New Build factory Space	NELC	A		Business & Innovation	Jun 21 - Oct 23	3.8	1.7
Pioneer Business Park Speculative Builds	NELC	A		Business & Innovation	Oct 21 - Apr 23	4.98	2.16
Horncastle Industrial Estate Extension	LCC	A		Business & Innovation	May 21 - Aug 23	3	1.5

Northern Lincolnshire Advanced Manufacturing Innovation Hub	NLBC	A		Business & Innovation	Apr 22 - Mar 24	8.5	3.5
Skegness Gateway Urban Extension	ELDC	A		Business & Innovation	Mar 21 - Mar 32	200	20
Fairfield Industrial Estate Extension	EL	A		Business & Innovation	Sep 20 - Mar 25	10.75	3
Cleethorpes Business Centre	NEL	A		Business & Innovation	2022/23 - 2023/24	1.42	1
						Total	338.23 69.23
DEFENCE							

Project	Applicant	Category Scores	Theme	Delivery Timescale	Overall Cost	Grant	
Lincoln Cyber Security Centre	Lincoln College	A		Skills/Digital	Sep 21 - Sep 22	2.18 1.42	
Employment Opportunity at RAF Scampton	LCC	A		Defence/Business & Innovation	TBC	0.98 0.7	
Next Generation Communications	Park Air Systems Ltd	A		Business & Innovation	Jan 22 - Jan 24	5.3 2.65	
						Total	8.46 4.77
VISITOR ECONOMY							

Project	Applicant	Category Scores	Theme	Delivery Timescale	Overall Cost £m	Grant £m
Skegness Foreshore Masterplan Programme	ELDC	A		Visitor Economy	Mar 21 - Jul 24	7.8 1.53
Cleethorpes Regeneration Programme Phase 2	NELC	A		Visitor Economy	Jun 21 - Mar 25	16.6 11.6
Mayflower	Boston College	A		Visitor Economy	Jan 22 - Aug 24	16.3 5
Boston Townscape Heritage Project	Boston BC	A		Visitor Economy	Started - Mar 23	2.3 0.25
Riverside Gateway Marina	WDLC	A		Visitor Economy	TBC 3-4 years Delivery	4.5 3.5
Black Sluice Pumping Station	Heritage Lincolnshire	A		Visitor Economy	Oct 21 - Dec 23	1 0.4
PE21 Phase 1a Site Acquisition	Boston BC	A		Visitor Economy	2021/22 - TBC	16.5 4.4
Scunthorpe Town Centre Phase 3	NLBC	A		Visitor Economy/Regeneration	Apr 21 - Mar 25	39.4 16.7
Connected Coast and Danelaw Path	ELDC	B		Visitor Economy	Jun 21 - Mar 30	20.56 14.83

Cleethorpes Regeneration Programme Phase 3: Category B	NELC	B		Visitor Economy	Apr 22 - Sep 26	2.85	2
Grimsby Fish Heritage Centre Museum	NELC	B		Visitor Economy	Apr 25 - Mar 27	8.55	5.2
						Total	136.36 65.41
ENERGY							

Project	Applicant	Category Scores	Theme	Delivery Timescale	Overall Cost £m	Grant £m	
H2Refuel	ORE	A	Energy/Business & Innovation	Oct 21 - Mar 23	6.25	3.7	
MODAL	TEC Partnership	A	Skills/Energy	Jul 21 - Aug 23	1.7	0.8	
Greater Lincolnshire Energy Testbed	UoL	A	Energy	Sep 21 - Mar 24	16	9.6	
Future Energy Centre	NL	A	Skills/Energy	Oct 21 - Jun 22	0.74	0.66	
Grantham Southern Gateway Sustainable Electricity Supply	SK	A	Energy	Mar 21 - Mar 25	29.91	29.91	
						Total	54.6 44.67
DIGITAL							

Project	Applicant	Category Scores	Theme	Delivery Timescale	Overall Cost £m	Grant £m	
Full Fibre North Lincolnshire Schools	NLC	A	Digital	Oct 21 - Apr 23	0.55	0.5	
Meeting Future Digital Expectations	DN Colleges Group	A	Digital	Feb 23 - Jul 23	0.74	0.67	
Digitising Lincolnshire's Past	LCC	A	Digital/Visitor Economy	Apr 21 - Dec 25	0.78	0.61	
						Total	2.07 1.78
WATER MANAGEMENT							

Project	Applicant	Category Scores	Theme	Delivery Timescale	Overall Cost £m	Grant £m
Keadby Terminal Assisted Outfall (TAO) Pumping Station Project	Environment Agency	A	Water Management	Strated - Apr 22	33.4	3.49
ARK National Flood Resilience Centre	NLC	A	Water Management	Aug 22 - Jul 24	12.5	10.5
Stallingborough Phase 3 Sea Defences	EA	A	Water Management	Apr 19 - Mar 25	18.1	1.5
Humberston Fitties Sea Defence	NELC	A	Water Management	Apr 21 - Mar 24	6.3	3.88
Wainfleet Flood Resilience Scheme	EL	A	Water Management	Jun22 - Jun 23	3.17	1.5

Halton Marshes Phase 2	EA	A		Water Management	Dec 23 - Mar 25	4.5	2
					Total	77.97	22.87
TRANSPORT							

Project	Applicant	Category Scores	Theme	Delivery Timescale	Overall Cost £m	Grant £m	
North Hykeham Relief Road	LCC	A		Transport	Aug 21 - Jun 27	154.46	24.1
Upgrade to A15 - Between Riseholme Roundabout (A15/A46 Junction) and Junction 4 (A15/M180 Junction) Feasibility Study	NLC (WLDC)	A		Transport	Apr 21 - Apr 23	1.8	1.8
Nettleham Roundabout Improvements Scheme	WLDC	A		Transport	Apr 21 - Jun 24	7.2	4.93
Lincoln Overbridge	Lincoln	A		Transport	Jun 21 - Jun 24	13.42	13.42
Rail Journey Time Improvements (Doncaster to Cleethorpes)	NL	A		Transport	Aug 21 - Dec 21	0.1	0.95
The Port of Boston - The passage into the future	BB	A		Transport	TBC	19.2	19.2
Europarc Bus Bridge	NEL	A		Transport	Oct 21 - Mar 22	1.25	1.05
					Total	197.43	65.45
HOUSING/HOUSING LED TRANSPORT							

Project	Applicant	Category Scores	Theme	Delivery Timescale	Overall Cost £m	Grant £m	
Grimsby West Urban Extension	NELC	A		Transport/Housing	Feb 21 - Oct 24	31.96	25.56
Brigg Link Road	NLC	A		Transport/Housing	2019/20 - 2022/23	3.02	2
Queen Elizabeth Road, Lincoln	CoL	A		Housing	Apr 22 - Mar 24	5.9	3.6
Lincoln Sustainable Growth Programme - Western Growth Corridor, Lincoln (WGC)	CoL	B		Housing	Sep 23 - Mar 26	30	15
					Total	70.88	46.16
GREEN INFRASTRUCTURE							

Project	Applicant	Category Scores	Theme	Delivery Timescale	Overall Cost £m	Grant £m	
Wilder Witham	G Lincs Nature	A		Green Infrastructure	2021 - 2025	0.21	0.21

Gainsborough Green Grid	WLDC	A		Green Infrastructure	May 21 - Nov 22	3	2
					Total	3.21	2.21

SCHEMES NOT RECOMMENDED FOR PIPELINE AT THIS TIME

Seperated Egg Project	L J Fairburn & Son Ltd	A
Sutton on Sea Affordable Housing	Rentplus UK Ltd	A
Boston Rail Chord	Boston BC	A
Unlocking Budget Support and Improving Accessibility	LCC	A
Robotic Egg System	L J Fairburn & Son Ltd	A
Culture for the County	New theatre Royal Lincoln	A
Hainton Estate Holiday Park	Christopher Hencage Ltd	B
Community Museum Hubs	LCC	B
Recycling food waste to generate renewable fuel/energy	LCC	A
Direct use of heat and electricity outputs from Hykeham Energy from Waste facility	LCC	A
Gainsborough Bridge Road Area Improvement	WLDC	A
Upgrade to A15 - Between Riseholme Roundabout (A15/A46 Junction) and Junction 4 (A15/M180 Junction) Delivery	NLC (WLDC)	A
Sleaford Growth Project (Phase 2)	NKDC	A
Humberside TPP	2G BioPOWER Ltd	A
Resource Park including Household Waste Recycling Centre with Reuse Facilities	LCC	A
Barton Link Road	NLC	B
Tallington By Pass and Bridge over East Coast Main Line	Tallington PC	B
Heart of Sleaford	NKDC	A
A52/A1 Roundabout	LCC	A

Sustainable Travel Initiatives Cycling and Walking Infrastructure Projects	NKDC	<i>B</i>	
New Transport Interchange Lincoln to Sleaford Line	NKDC	<i>B</i>	
South of Lincoln Health Hub	NKDC	<i>A</i>	
Health Hub for area to the south east of of Lincoln	NKDC	<i>B</i>	

KEY - Based on analysis of OBC submissions

High Priority (Scores 30+)
Medium Priority (Scores 20+ - 29+)
Lower Priority (Scores 0 - 20)

Requested £m

Requested £m

Requested £m

Requested £m

Requested £m

GL LEP Board Forward Plan 2021/22

Date	Venue	Standing Items	Others
28 th May 2021 at 10.00am	1/4ly	Chair and CX report Quarterly performance, finance, ADP and programmes Pan Humber Collaboration LEP Review	Vision and Priorities Business Plan and final budget for 21/22 Risk Register, LAF and Scheme of Delegation Business Lincolnshire Board Progress Report
29 th June 2021 at 3.00pm		Economic Plan Progress and Recovery Fund Proposals Skills for Jobs White Paper Update and Skills Strategy Refresh Economic Dashboard	Risk Register, LAF and Scheme of Delegation Decarbonisation Inward Investment and Place marketing
30 th July 2021 at 10.00am	1/4ly	LEP Review Humber Freeport Chair and CX report Quarterly performance, finance, ADP and programmes	Visitor Economy Board priorities and Tourism Action Plan
28 th September at 3.00pm			Manufacturing Board Defence Board
26 th October at 3.00pm			Food Board
26 th November at 10.00am	1/4ly	National Budget Chair and CX report Quarterly performance, finance, ADP and programmes	Innovation Council Energy Council